

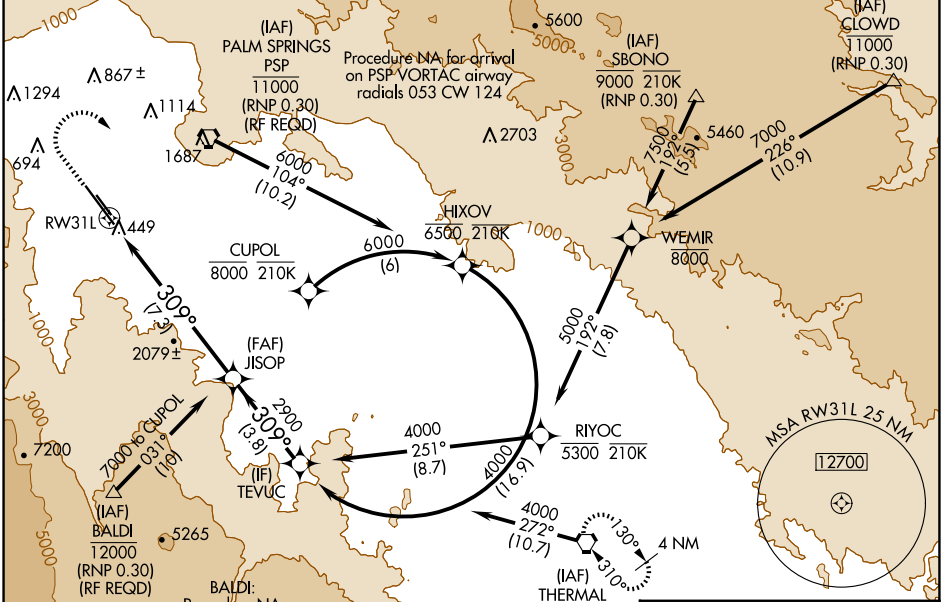
APP CRS	Rwy Idg	<b>8500</b>
<b>309°</b>	TDZE	<b>430</b>
	Apt Elev	<b>477</b>

# RNAV (RNP) Y RWY 31L

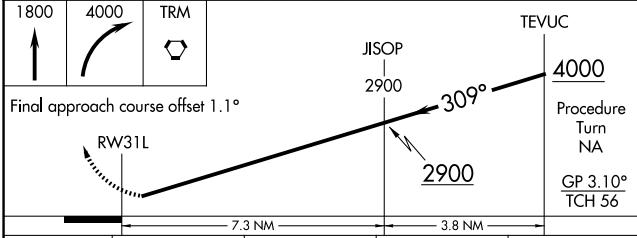
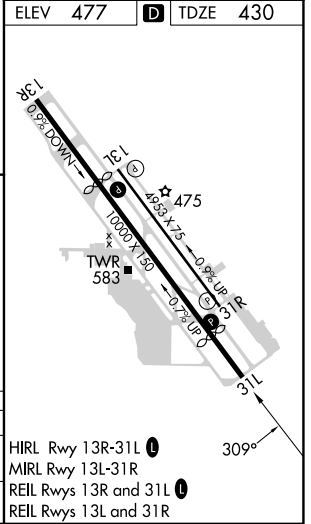
PALM SPRINGS INTL (PSP)

RNP AR APCH.		MISSED APPROACH: Climb to 1800, then climbing right turn to 4000 direct TRM VORTAC and hold.
<p><b>▼</b> <b>▲</b> Missed approach requires minimum climb of 340' per NM to 3000. For uncompensated Baro-VNAV systems, procedure NA below 2°C or above 54°C.</p>		

ATIS <b>124.65</b>	SOCAL APP CON <b>126.7 370.95</b> <b>135.275 251.1</b>	PALM SPRINGS TOWER* <b>119.7 (CTAF) 0 377.05</b>	GND CON <b>121.9</b>	CLNC DEL <b>128.35</b>	UNICOM <b>122.95</b>
-----------------------	--	---	-------------------------	---------------------------	-------------------------



ELEV	477	D	TDZE	430
------	-----	---	------	-----



CATEGORY	A	B	C	D
RNP 0.30 DA	734-1 304 (300-1)			

## AUTHORIZATION REQUIRED

HIRL Rwy 13R-31L  
MIRL Rwy 13L-31R  
REL Rwy 13R and 31L  
REL Rwy 13L and 31R

SW-3, 20 FEB 2025 to 20 MAR 2025

SW-3, 20 FEB 2025 to 20 MAR 2025