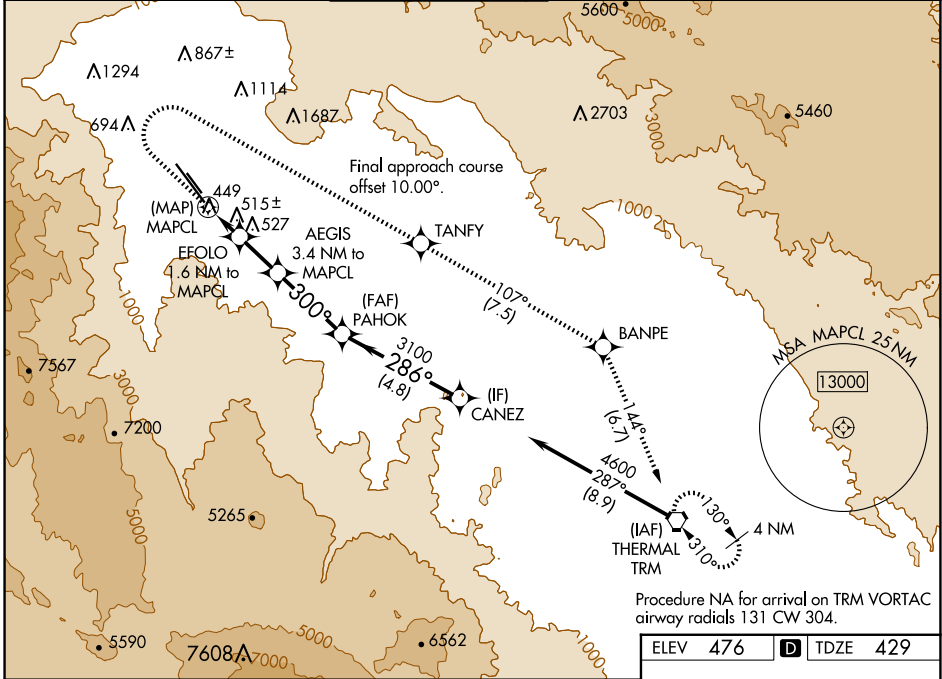


WAAS CH 50244 W31A	APP CRS 300°	Rwy Idg TDZE Apt Elev	8500 429 476
--	------------------------	-----------------------------	---

RNAV (GPS) Z RWY 31L

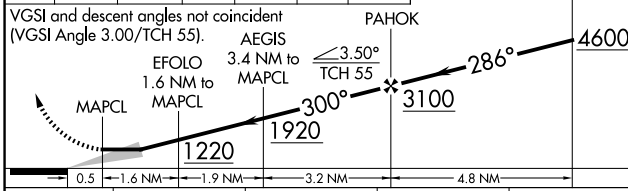
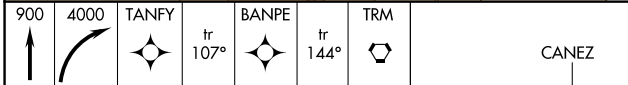
PALM SPRINGS INTL (PSP)

RNP APCH-GPS.		MISSED APPROACH: Climb to 900 then climbing right turn to 4000 direct TANFY and track 107° to BANPE and track 144° to TRM VORTAC and hold. *Missed approach requires minimum climb of 355 feet per NM to 2100.				
Circling NA southwest of Rwy 13R-31L.		PALM SPRINGS TOWER * 119.7 (CTAF) 0 377.05		GND CON 121.9	CLNC DEL 128.35	UNICOM 122.95
ATIS 124.65	SOCAL APP CON 126.7 370.95 135.275 251.1					

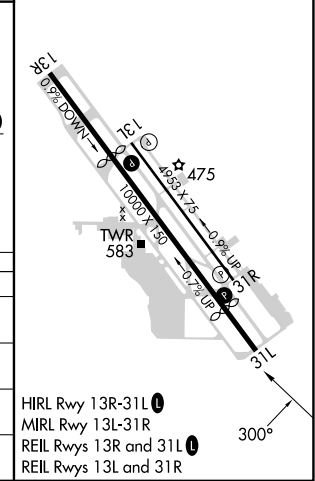


Procedure NA for arrival on TRM VORTAC airway radials 131 CW 304.

ELEV 476	D TDZE 429
----------	-------------------



CATEGORY	A	B	C	D
LP MDA	700-1 271 (300-1)	780-1 351 (400-1)	1320-2½	891 (900-2½)
LNAV MDA*	780-1		351 (400-1)	
LNAV MDA	920-1 491 (500-1)	1180-1¼ 751 (800-1¼)	1440-3	1011 (1000-3)
C CIRCLING	920-1 444 (500-1)	1180-1¼ 704 (800-1¼)	1440-3 964 (1000-3)	1760-3 1284 (1300-3)



SW-3, 20 FEB 2025 to 20 MAR 2025

SW-3, 20 FEB 2025 to 20 MAR 2025