

LOC I-SBD <b>109.3</b>	APP CRS <b>057°</b>	Rwy ldg <b>10000</b> TDZE <b>1103</b> Apt Elev <b>1159</b>
---------------------------	------------------------	--

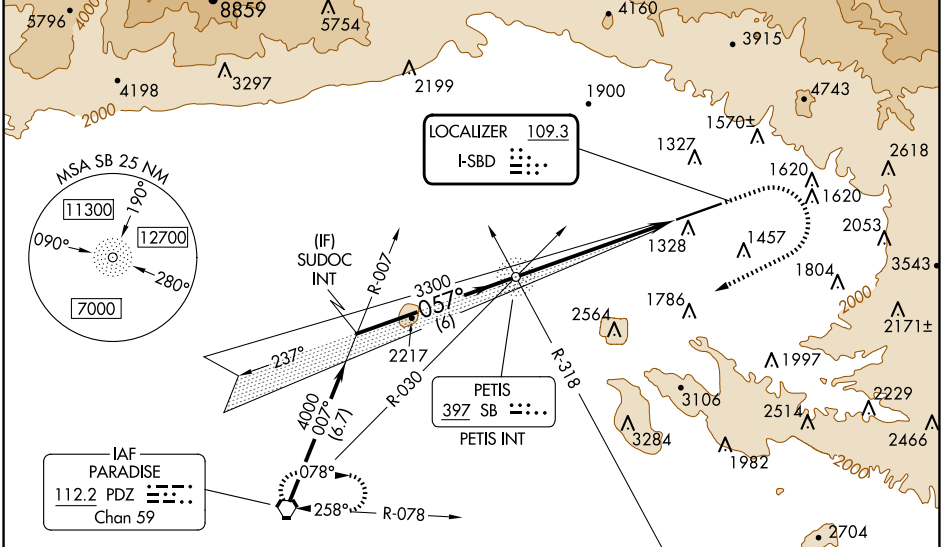
# ILS or LOC Z RWY 6

SAN BERNARDINO INTL (SBD)

**⚠** Circling NA northwest of Rwy 6-24. When local altimeter setting not received, use Ontario altimeter setting and increase DA to 1426 feet and all visibilities 1/2 SM; increase all MDA 80 feet and S-LOC Cats C/D and Circling Cat C visibility 1/4 SM.

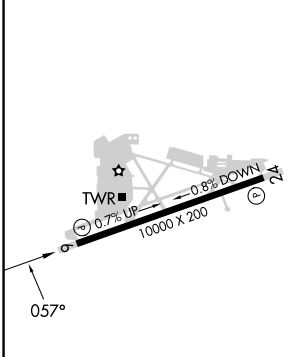
**MISSED APPROACH:** Climb to 2000 then climbing right turn to 6000 direct PDZ VORTAC and hold, continue climb-in-hold to 6000.  
\* Missed approach requires minimum climb of 340 feet per NM to 4000; if unable to meet climb gradient, see LOC Y RWY 6.

D-ATIS <b>124.175</b>	SOCAL APP CON <b>127.0 318.2</b>	SAN BERNARDINO TOWER* <b>119.45 (CTAF) 0</b>	GND CON <b>121.8</b>	UNICOM <b>122.975</b>
--------------------------	-------------------------------------	---	-------------------------	--------------------------



Procedure NA for arrival on PDZ VORTAC airway radials 012 CW 030.

ELEV 1159	<b>D</b>	TDZE 1103
-----------	----------	-----------



HIRL Rwy 6-24  
REIL Rwy 6 and 24

FAF to MAP 6.1 NM

Knots	60	90	120	150	180
Min:Sec	6:06	4:04	3:03	2:26	2:02

SUDOC INT	SB NDB PETIS INT	2000	6000	PDZ
		↑	↷	⬡
GS 3.00° TCH 51	4000	057°	3118	3300
	6 NM		6.1 NM	
CATEGORY	A	B	C	D
S-ILS 6*	1353-3/4		250 (200-3/4)	
S-LOC 6*	1740-1	637 (600-1)	1740-1 3/4	637 (600-1 3/4)
<b>C</b> CIRCLING	1740-1	581 (600-1)	1760-1 3/4	2640-3 601 (700-1 3/4)
				1481 (1500-3)

SW-3, 20 FEB 2025 to 20 MAR 2025

SW-3, 20 FEB 2025 to 20 MAR 2025