

LOC I-SBD 109.3	APP CRS 057°	Rwy Idg 10000
		TDZE 1103
		Apt Elev 1159

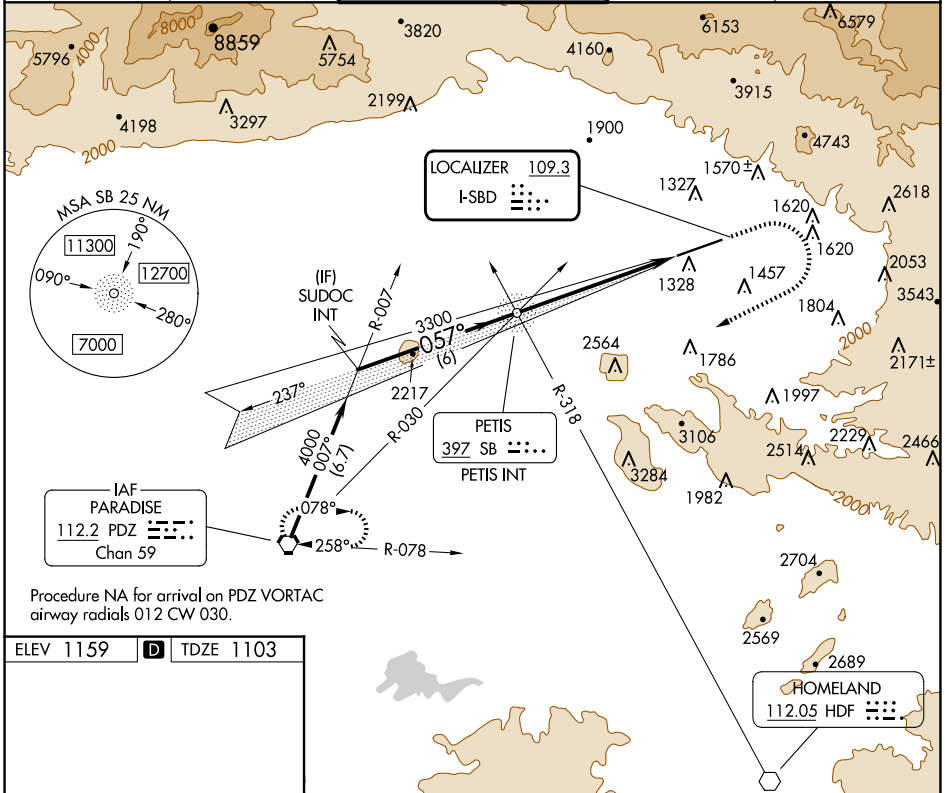
LOC Y RWY 6

SAN BERNARDINO INTL (SBD)

⚠ Circling NA northwest of Rwy 6-24. When local altimeter not received, use Ontario altimeter setting and increase all MDA 80 feet; increase S-LOC Cat B and Circling Cat B visibility ¼ SM.

MISSED APPROACH: Climb to 2700 then climbing right turn to 6000 direct PDZ VORTAC and hold, continue climb-in-hold to 6000.

D-ATIS 124.175	SOCAL APP CON 127.0 318.2	SAN BERNARDINO TOWER* 119.45 (CTAF) 0	GND CON 121.8	UNICOM 122.975
--------------------------	-------------------------------------	---	-------------------------	--------------------------



Procedure NA for arrival on PDZ VORTAC
airway radials 012 CW 030.

ELEV 1159	D	TDZE 1103
-----------	----------	-----------

HIRL Rwy 6-24
REIL Rwy 6 and 24
FAF to MAP 6.1 NM

Knots	60	90	120	150	180
Min:Sec	6:06	4:04	3:03	2:26	2:02

SUDOC INT	VGSIs and descent angles not coincident (VGSi Angle 3.00/TCH 52).		2700	6000	PDZ
4000	057°	3300	3.33°	TCH 52	
	6 NM		6.1 NM		
CATEGORY	A	B	C	D	
S-6	2020-1¼	917 (900-1¼)	2060-3	957 (1000-3)	
C CIRCLING	2020-1¼	861 (900-1¼)	2060-3 901 (1000-3)	2640-3 1481 (1500-3)	

SW-3, 20 FEB 2025 to 20 MAR 2025

SW-3, 20 FEB 2025 to 20 MAR 2025