

APP CRS 240°	Rwy Idg 10000
	TDZE 1159
	Apt Elev 1159

RNAV (RNP) RWY 24

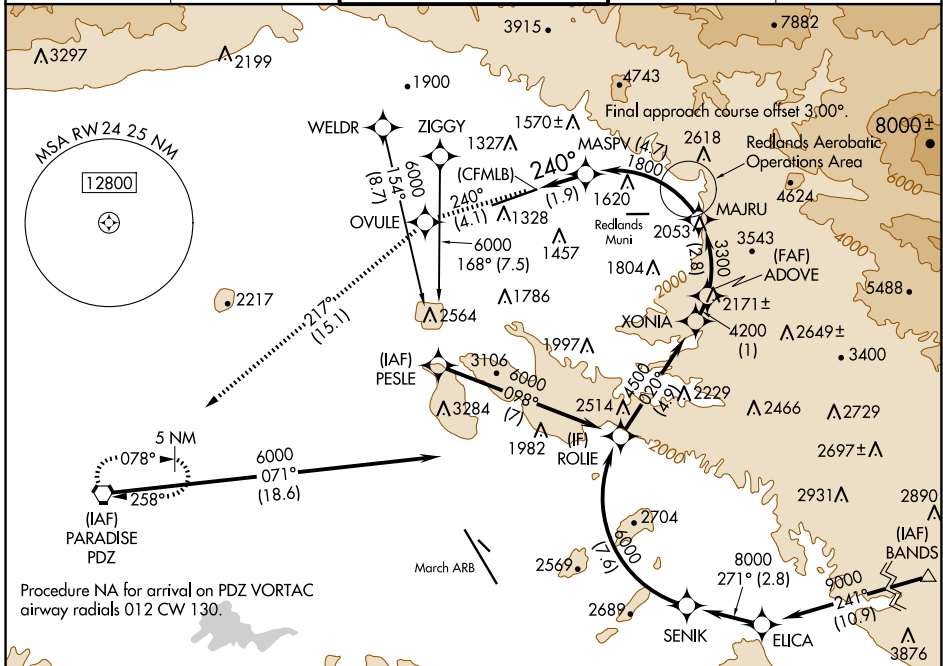
SAN BERNARDINO INTL (SBD)

RNP AR APCH - GPS, RF. Authorization required.

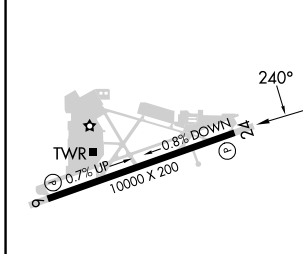
For uncompensated Baro-VNAV systems, procedure NA below 2°C or above 54°C.

MISSED APPROACH: Climb to 6000 on track 240° to OVULE and track 217° to PDZ VORTAC and hold, continue climb-in-hold to 6000.

D-ATIS 124.175	SOCAL APP CON 127.0 318.2	SAN BERNARDINO TOWER* 119.45 (CTAF) 0	GND CON 121.8	UNICOM 122.975
--------------------------	-------------------------------------	--	-------------------------	--------------------------



ELEV 1159	D TDZE 1159
-----------	--------------------



6000	OVULE	tr 217°	PDZ	ROLIE
tr 240°				6000
	MAJRU		ADOVE	XONIA
	3300		4200	4500
	MAJRU		4200	
	3300		4200	
	1.9 NM	4.7 NM	2.8 NM	1 NM
	4.9 NM			
CATEGORY	A	B	C	D
RNP 0.15 DA	1520/55 361 (400-1)			

AUTHORIZATION REQUIRED

HIRL Rwy 6-24 **0**
REIL Rwy 6 and 24 **0**

SW-3, 20 FEB 2025 to 20 MAR 2025

SW-3, 20 FEB 2025 to 20 MAR 2025