

APP CRS <b>057°</b>	Rwy Idg <b>10000</b>
	TDZE <b>1103</b>
	Apt Elev <b>1159</b>

# RNAV (RNP) X RWY 6

SAN BERNARDINO INTL (SBD)

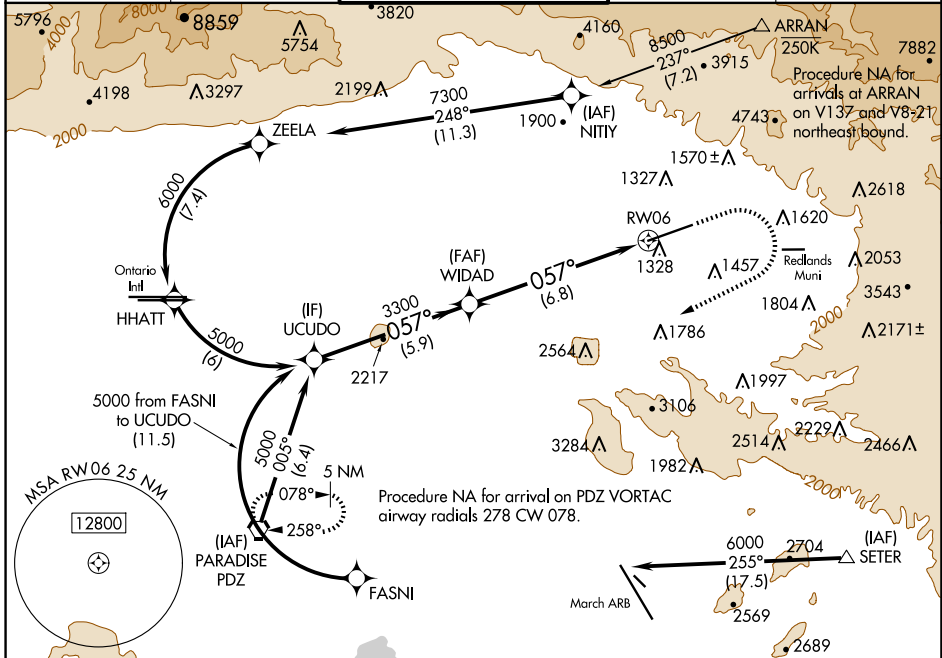
RNP AR APCH-GPS. Authorization required. From NITY or SETER: RF.

MISSED APPROACH: Climb to 2000 then climbing right turn to 6000 direct PDZ VORTAC and hold.

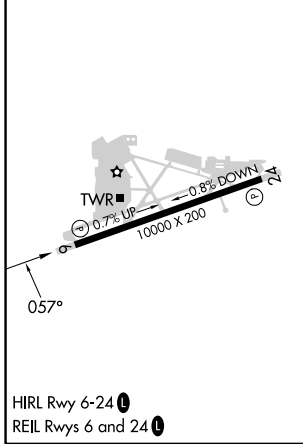
\*Missed approach requires minimum climb of 350 feet per NM to 4000; if unable to meet climb gradient, see RNAV (GPS) Y RWY 6.

For uncompensated Baro-VNAV systems, procedure NA below 2°C or above 54°C.

D-ATIS <b>124.175</b>	SOCAL APP CON <b>127.0 318.2</b>	SAN BERNARDINO TOWER* <b>119.45</b> (CTAF) <b>0</b>	GND CON <b>121.8</b>	UNICOM <b>122.975</b>
--------------------------	-------------------------------------	--	-------------------------	--------------------------



ELEV 1159	<b>D</b>	TDZE 1103
-----------	----------	-----------



UCUDO	WIDAD	2000	6000	PDZ
5000	3300	↑	↷	◻
GP 3.00° TCH 51	3300			RWY 6
	5.9 NM	6.8 NM		
CATEGORY	A	B	C	D
RNP 0.15 DA*	1353/40 250 (200-¾)			
RNP 0.30 DA*	1403/45 300 (300-⅞)			
<b>AUTHORIZATION REQUIRED</b>				

SW-3, 20 FEB 2025 to 20 MAR 2025

SW-3, 20 FEB 2025 to 20 MAR 2025