

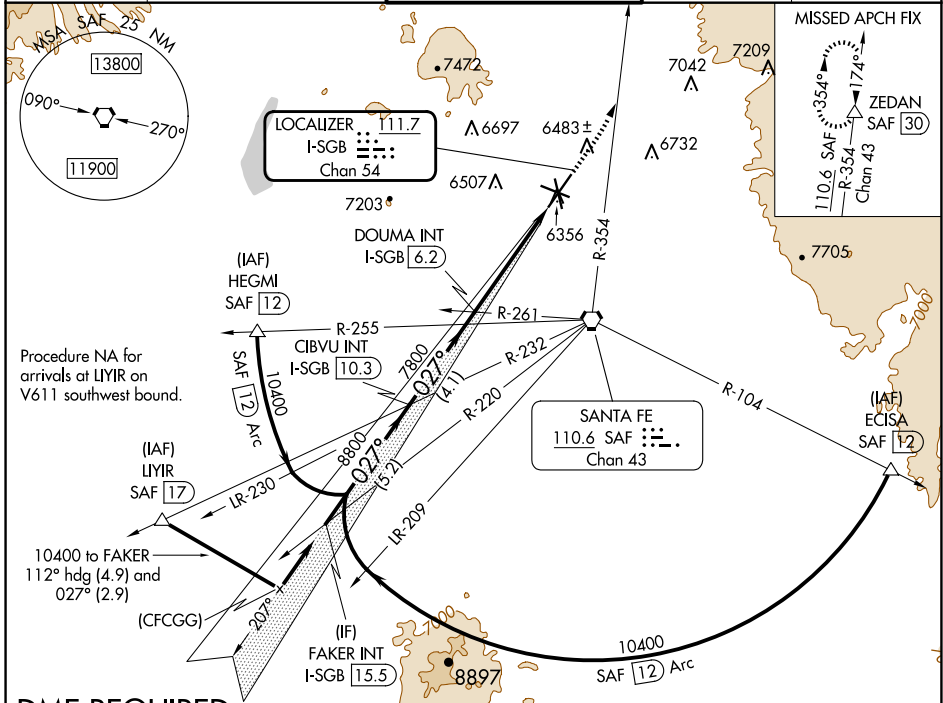
LOC/DME I-SGB 111.7 Chan 54	APP CRS 027°	Rwy Idg TDZE Apt Elev	8366 6303 6349
---	------------------------	-----------------------------	---

ILS or LOC RWY 2

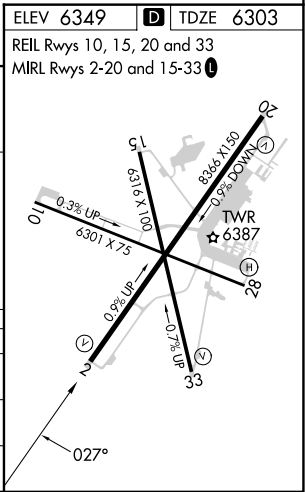
SANTA FE RGNL (SAF)

DME required. MISSED APPROACH: Climb to 7300 then climbing left turn to 11000 on SAF VORTAC R-354 to ZEDAN/SAF 30 DME and hold.

ATIS 128.55	ALBUQUERQUE CENTER 132.8 346.35	SANTA FE TOWER ★ 119.5 (CTAF) 239.3	GND CON 121.7	UNICOM 122.95
-----------------------	---	---	-------------------------	-------------------------



FAKER INT I-SGB 15.5	VGSi and ILS glidepath not coincident (VGSi Angle 3.00/TCH 69)			7300	11000	ZEDAN
	CIBVU INT I-SGB 10.3	DOUMA INT I-SGB 6.2		SAF R-354		△
10400	8800	7800	7800	2.8	1.6	*LOC only
GS 3.00° TCH 53	5.2 NM	4.1 NM	3.4 NM	1.2		
CATEGORY	A	B	C	D		
S-ILS 2	6503-¾		200 (200-¾)			
S-LOC 2	6740-1	437 (400-1)	6740-1¼	437 (400-1¼)		
CIRCLING	6800-1	6920-1	7340-3	7660-3		
	451 (500-1)	571 (600-1)	991 (1000-3)	1311 (1400-3)		



SW-1, 20 FEB 2025 to 20 MAR 2025

SW-1, 20 FEB 2025 to 20 MAR 2025