

VORTAC SAF <b>110.6</b> Chan 43	APP CRS <b>158°</b>	Rwy Idg TDZE Apt Elev <b>N/A</b> <b>N/A</b> <b>6349</b>
---------------------------------------	------------------------	--

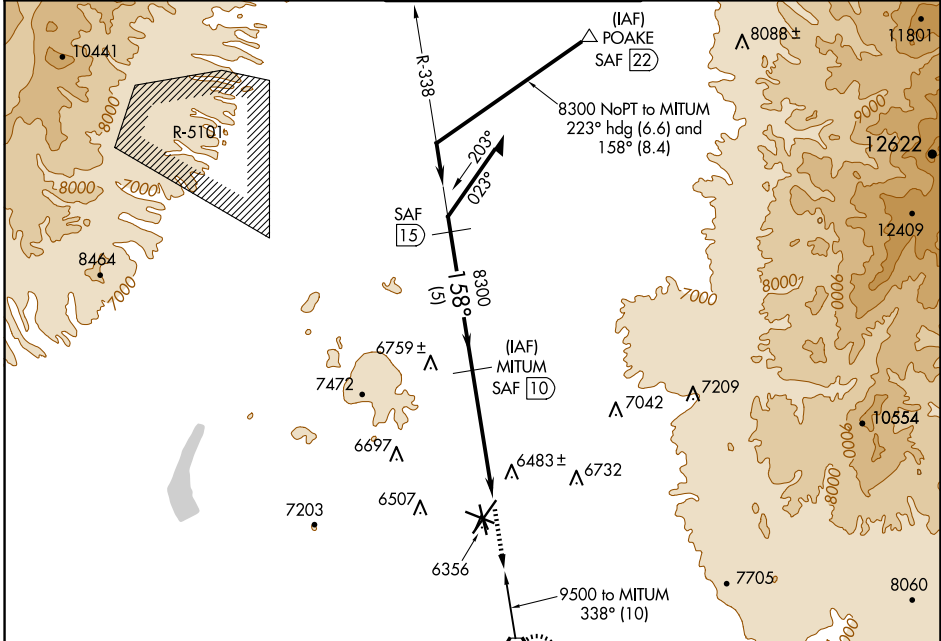
# VOR/DME-A

## SANTA FE RGNL (SAF)

**⚠** When control tower closed, obtain local altimeter setting on UNICOM; when not received, use Los Alamos altimeter setting: increase all MDAs 160 feet.

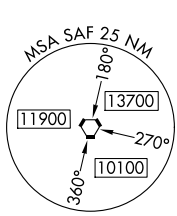
**MISSED APPROACH:** Climb to 9000 direct SAF VORTAC and hold, continue climb-in-hold to 9000.

ATIS <b>128.55</b>	ALBUQUERQUE CENTER <b>132.8 346.35</b>	SANTA FE TOWER ★ <b>119.5 (CTAF) 239.3</b>	GND CON <b>121.7</b>	UNICOM <b>122.95</b>
-----------------------	---	---	-------------------------	-------------------------

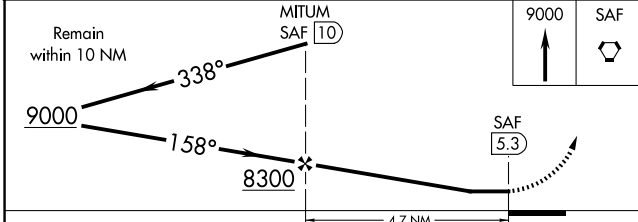
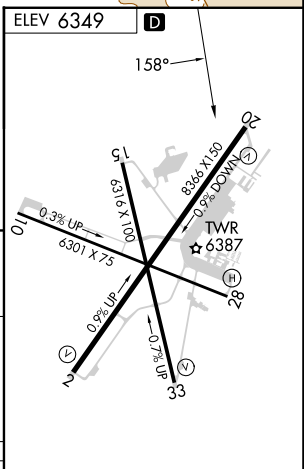


SW-1, 20 FEB 2025 to 20 MAR 2025

SW-1, 20 FEB 2025 to 20 MAR 2025



SANTA FE  
110.6 SAF  
Chan 43



CATEGORY	A	B	C	D
CIRCLING	6960-1	611 (700-1)	7340-3 991 (1000-3)	7660-3 1311 (1400-3)

REIL Rwy 10, 15, 20 and 33  
MIRL Rwy 2-20 and 15-33