

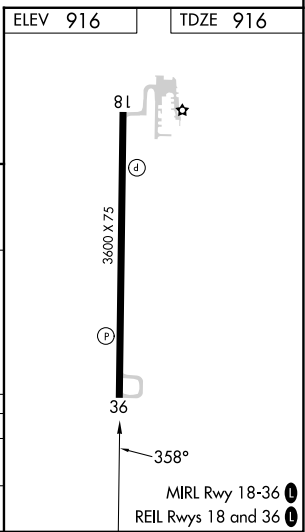
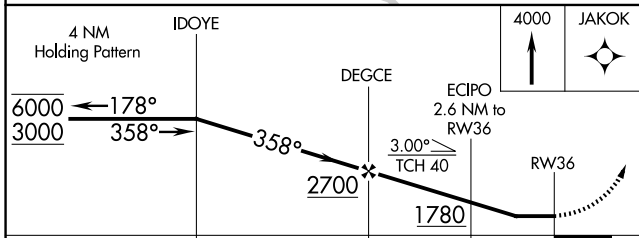
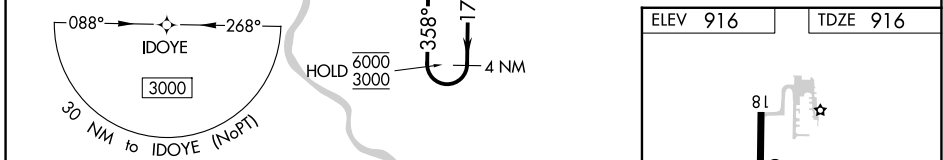
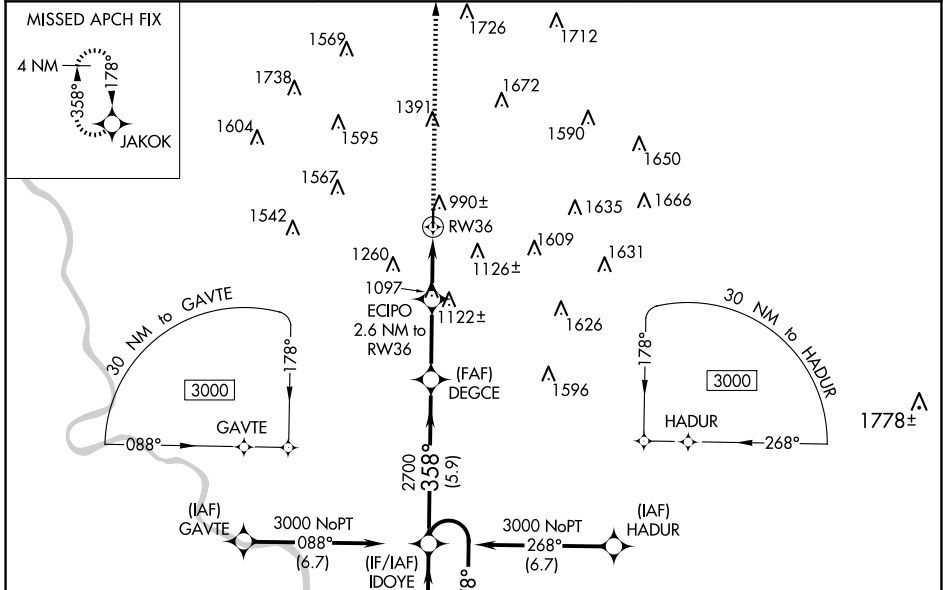
APP CRS	Rwy Idg	<b>3600</b>
<b>358°</b>	TDZE	<b>916</b>
	Apt Elev	<b>916</b>

# RNAV (GPS) RWY 36

GOULD PETERSON MUNI (K57)

RNP APCH - GPS.	
<p><b>V</b> Rwy 36 helicopter visibility reduction below 3/4 SM NA.</p> <p><b>NA</b> Circling Rwy 18 NA at night.</p> <p>Use Shenandoah altimeter setting; when not received, use Clarinda altimeter setting and increase all MDAs 20 feet.</p>	<p>MISSED APPROACH: Climb to 4000 direct JAKOK and hold, Continue climb-in-hold to 4000</p>

SDA AWOS-3 <b>125.525</b>	MINNEAPOLIS CENTER <b>119.6 290.4</b>	CTAF <b>122.9 0</b>
------------------------------	--	------------------------



CATEGORY	A	B	C	D
LNVA MDA	1460-1	544 (600-1)	1460-1 1/8 544 (600-1 1/8)	NA
<b>C</b> CIRCLING	1520-1 604 (700-1)	1540-1 624 (700-1)	1680-2 1/4 764 (800-2 1/4)	NA

NC-3, 20 FEB 2025 to 20 MAR 2025

NC-3, 20 FEB 2025 to 20 MAR 2025