

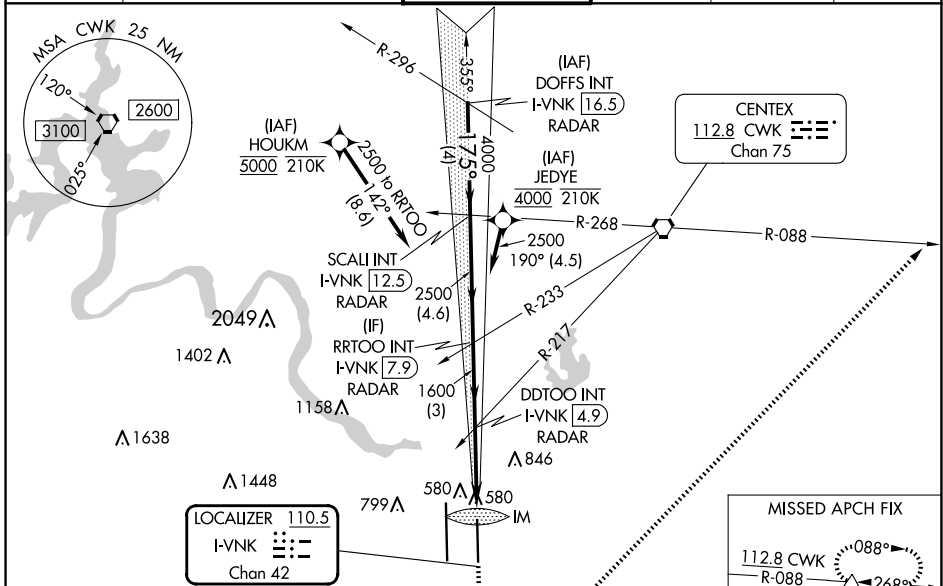
LOC/DME I-VNK 110.5 Chan 42	APP CRS 175°	Rwy Idg TDZE Apt Elev	9000 492 542
--	------------------------	-----------------------------	---

ILS RWY 18L (CAT II & III)

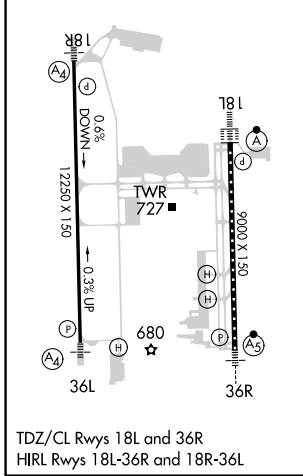
AUSTIN-BERGSTROM INTL (AUS)

RNP APCH-GPS. From HOUKM or JEDYE.		ALSF-2 	MISSED APPROACH: Climb to 1000 then climbing left turn to 3000 on heading 040° and CWK VORTAC R-088 to HOOKK/CWK 17 DME and hold.
RADAR required for procedure entry from DOFFS. DME required.			
Simultaneous approach authorized.			

D-ATIS 124.4	AUSTIN APP CON 127.225 317.65 (EAST) 120.875 270.25 (SOUTH) 119.0 370.85 (WEST)	AUSTIN TOWER 121.0 281.5	GND CON 121.9 348.6	CLNC DEL 125.5 263.0	CPDLC
------------------------	---	------------------------------------	-------------------------------	--------------------------------	-------



ELEV 542	D TDZE 492
----------	-------------------



VGS and ILS glidepath not coincident (VGS Angle 3.00/TCH 74).		1000	3000	HOOKK
DOFFS INT I-VNK 16.5 (RADAR)	SCALI INT I-VNK 12.5 (RADAR)	RRTOO INT I-VNK 7.9 (RADAR)	DDTOO INT I-VNK 4.9 (RADAR)	IM
5000	4000	2500	1600	592
GS 3.00° TCH 61				
4 NM	4.6 NM	3 NM	3.3 NM	1201'
CATEGORY	A	B	C	D
S-ILS 18L	CAT II RA 105/12 100 DA 592			
S-ILS 18L	CAT III RVR 06			

CATEGORY II & III ILS - SPECIAL AIRCREW & AIRCRAFT CERTIFICATION REQUIRED

SC-3, 20 FEB 2025 to 20 MAR 2025

SC-3, 20 FEB 2025 to 20 MAR 2025