


PALMS THREE DEPARTURE


AL-556 (FAA)

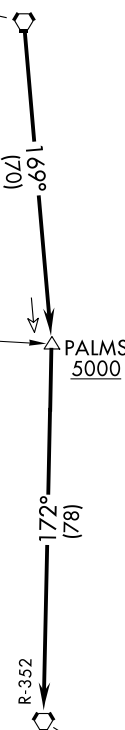
AUSTIN, TEXAS

D-ATIS
 124.4
 CLNC DEL
 125.5 263.0
 CPDLC
 GND CON
 121.9 348.6
 AUSTIN TOWER
 121.0 281.5
 AUSTIN DEP CON
 127.225 317.65

**TOP ALTITUDE:
 ASSIGNED BY ATC**

CENTEX
 112.8 CWK 
 Chan 75

STINSON
 108.4 SSF 
 R-084



NOTE: RADAR required.

TAKEOFF MINIMUMS

Rwys 18L/R: Standard.

Rwys 36L/R: Standard with minimum climb of 240' per NM to 2600.

NOTE: Chart not to scale.



DEPARTURE ROUTE DESCRIPTION

TAKEOFF RUNWAYS 18L/R, 36L/R: Climb on assigned heading for vectors to CWK VORTAC, then on CWK R-169 to cross PALMS INT at or above 5000, then on CRP R-352 to CRP VORTAC. Maintain altitude assigned by ATC, expect filed altitude 10 minutes after departure.

PALMS THREE DEPARTURE

SC-3, 20 FEB 2025 to 20 MAR 2025

SC-3, 20 FEB 2025 to 20 MAR 2025