

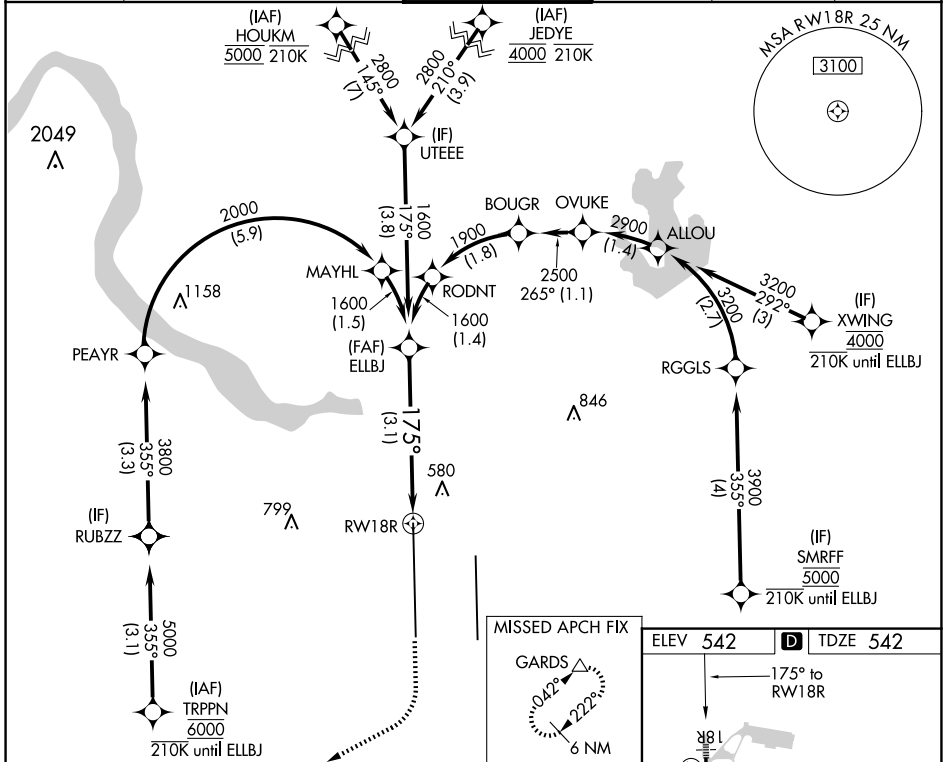
APP CRS	Rwy Idg	12250
175°	TDZE	542
	Apt Elev	542

RNAV (RNP) Z RWY 18R

AUSTIN-BERGSTROM INTL (AUS)

RNP AR APCH-GPS. RADAR required.		MALS	MISSED APPROACH: Climb to 1000 then climbing right turn to 3500 direct GARDS and hold.
Simultaneous approach authorized. For uncompensated Baro-VNAV systems, procedure NA below -5°C or above 54°C.			

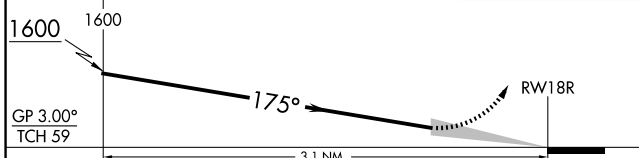
D-ATIS	AUSTIN APP CON	AUSTIN TOWER	GND CON	CLNC DEL	CPDLC
124.4	127.225 317.65 (EAST) 120.875 270.25 (SOUTH) 119.0 370.85 (WEST)	121.0 281.5	121.9 348.6	125.5 263.0	



SC-3, 20 FEB 2025 to 20 MAR 2025

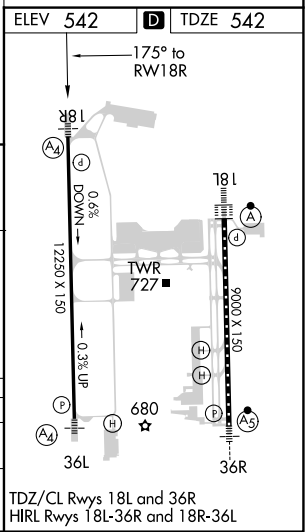
SC-3, 20 FEB 2025 to 20 MAR 2025

See planview for multiple IF locations.		
1000	3500	GARDS



CATEGORY	A	B	C	D
RNP 0.30 DA		883/40	341 (400-3/4)	

AUTHORIZATION REQUIRED



TDZ/CL Rws 18L and 36R
HIRL Rws 18L-36R and 18R-36L