

(SAYBR3.SAYBR) 21112

# SAYBR THREE DEPARTURE (RNAV)

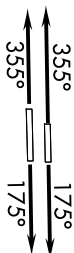
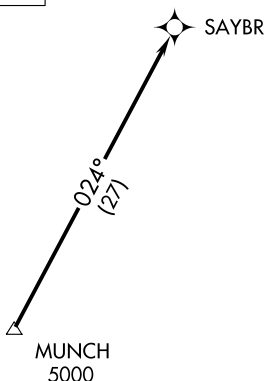
AL-556 (FAA)

AUSTIN-BERGSTROM INTL (AUS)

AUSTIN, TEXAS

D-ATIS  
 124.4  
 CLNC DEL  
 125.5 263.0  
 CPDLC  
 GND CON  
 121.9 348.6  
 AUSTIN TOWER  
 121.0 281.5  
 AUSTIN DEP CON  
 127.225 317.65

**TOP ALTITUDE:  
 ASSIGNED BY ATC**



NOTE: RADAR required.  
 NOTE: DME/DME/IRU or GPS required.  
 NOTE: RNAV 1.  
 NOTE: For DFW terminal area arrivals  
 at FL230 or below only.

### TAKEOFF MINIMUMS

Rwys 18L/R: Standard.  
 Rwys 36L/R: Standard with minimum climb  
 of 240' per NM to 2600.

NOTE: Chart not to scale.



### DEPARTURE ROUTE DESCRIPTION

TAKEOFF RUNWAYS 18L/R: Climb on heading 175° or as assigned by ATC for  
 vectors to cross MUNCH at or above 5000, thence . . . .

TAKEOFF RUNWAYS 36L/R: Climb on heading 355° or as assigned by ATC for  
 vectors to cross MUNCH at or above 5000, thence . . . .

. . . . on track 024° to SAYBR. Maintain altitude assigned by ATC.  
 Expect filed altitude 10 minutes after departure.

# SAYBR THREE DEPARTURE (RNAV)

(SAYBR3.SAYBR) 22APR21

AUSTIN, TEXAS

AUSTIN-BERGSTROM INTL (AUS)

SC-3, 20 FEB 2025 to 20 MAR 2025

SC-3, 20 FEB 2025 to 20 MAR 2025