

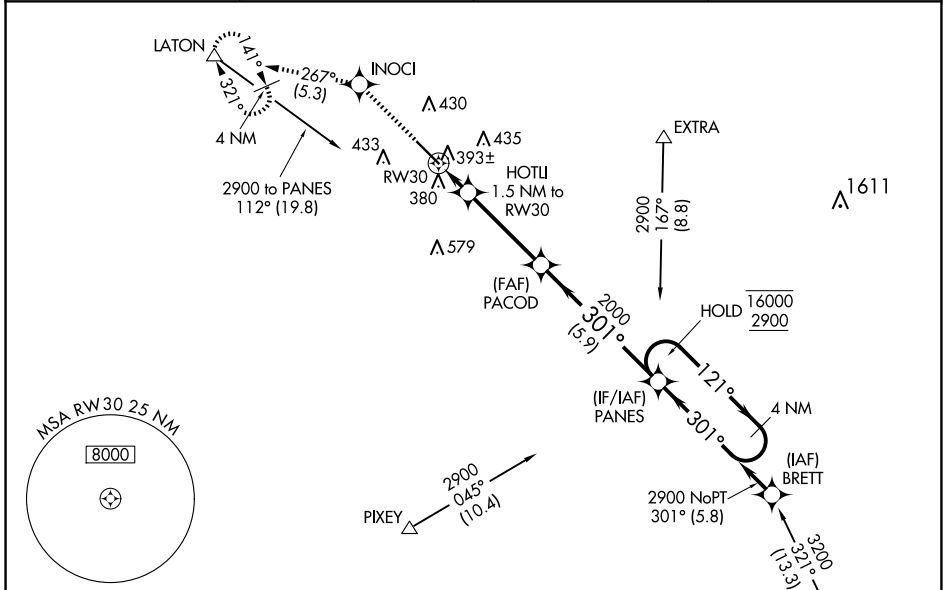
WAAS CH <b>77623</b> <b>W30A</b>	APP CRS <b>301°</b>	Rwy Idg TDZE Apt Elev	<b>5635</b> <b>295</b> <b>295</b>
--	------------------------	-----------------------------	---

# RNAV (GPS) RWY 30

VISALIA MUNI (VIS)

RNP APCH.	MALSR	MISSED APPROACH: Climb to 3000 direct INOCI and on track 267° to LATON and hold, continue climb-in-hold to 3000.
<p><b>⚠</b> For uncompensated Baro-VNAV systems, LNAV/VNAV NA below -15°C or above 54°C. For inop ALS, increase LNAV/VNAV all Cats visibility to 3/4 SM, LNAV Cats C/D to 1 SM.</p>		

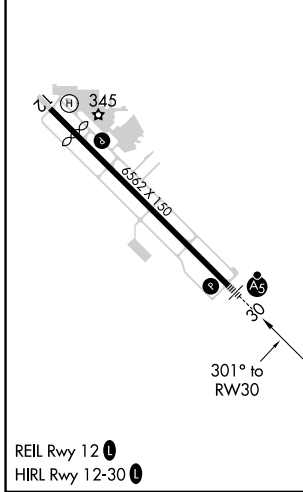
AWOS-3PT <b>119.925</b>	FRESNO APP CON <b>118.5</b>	CLNC DEL <b>118.5</b>	UNICOM <b>123.05 (CTAF)</b>
----------------------------	--------------------------------	--------------------------	--------------------------------



SW-2, 20 FEB 2025 to 20 MAR 2025

SW-2, 20 FEB 2025 to 20 MAR 2025

ELEV 295	<b>D</b>	TDZE 295
----------	----------	----------



3000	INOCI	LATON	PANES	
↑	✧	tr 267°	4 NM Holding Pattern	
*LNAV only.		HOTLI 1.5 NM to RW30	GP 3.00° TCH 53	
RW30		820*	2000	
1 NM		0.5 NM	3.7 NM	5.9 NM
CATEGORY	A	B	C	D
LPV DA		502-1/2	207 (300-1/2)	
LNAV/VNAV DA		554-1/2	259 (300-1/2)	
LNAV MDA	660-1/2	365 (400-1/2)	660-5/8	365 (400-5/8)
<b>C</b> CIRCLING	720-1	760-1	760-1/2	940-2
	425 (500-1)	465 (500-1)	465 (500-1/2)	645 (700-2)