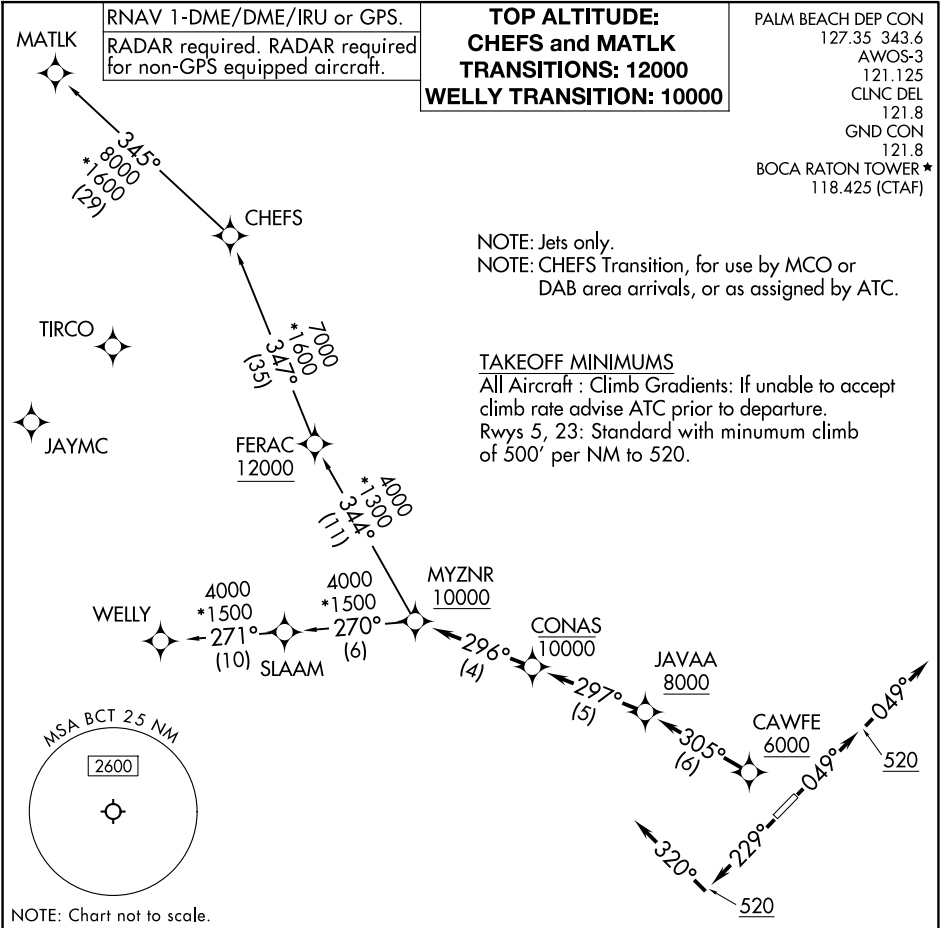


(MYZNR3.MYZNR) 24305

AL-560 (FAA)

BOCA RATON (BCT)
BOCA RATON, FLORIDA

MYZNR THREE DEPARTURE (RNAV)



NOTE: Chart not to scale.

DEPARTURE ROUTE DESCRIPTION

TAKEOFF RUNWAY 5: Climb on heading 049° to 520, then on heading 049° or as assigned by ATC, for vectors to cross CAWFE at or above 6000, thence . . .

TAKEOFF RUNWAY 23: Climb on heading 229° to 520, then on heading 320° or as assigned by ATC, for vectors to cross CAWFE at or above 6000, thence . . .

. . . on track 305° to cross JAVA at or above 8000, then on track 297° to cross CONAS at or below 10000, then on track 296° to cross MYZNR at or above 10000. Departures on MATLK and CHEFS Transitions maintain 12000; Departures on WELLY Transition maintain 10000. Expect clearance to filed altitude within 10 minutes after departure.

- CHEFS TRANSITION (MYZNR3.CHEFS)
- MATLK TRANSITION (MYZNR3.MATLK)
- WELLY TRANSITION (MYZNR3.WELLY)

MYZNR THREE DEPARTURE (RNAV)
(MYZNR3.MYZNR) 31OCT24

BOCA RATON, FLORIDA
BOCA RATON (BCT)

SE-3, 20 FEB 2025 to 20 MAR 2025