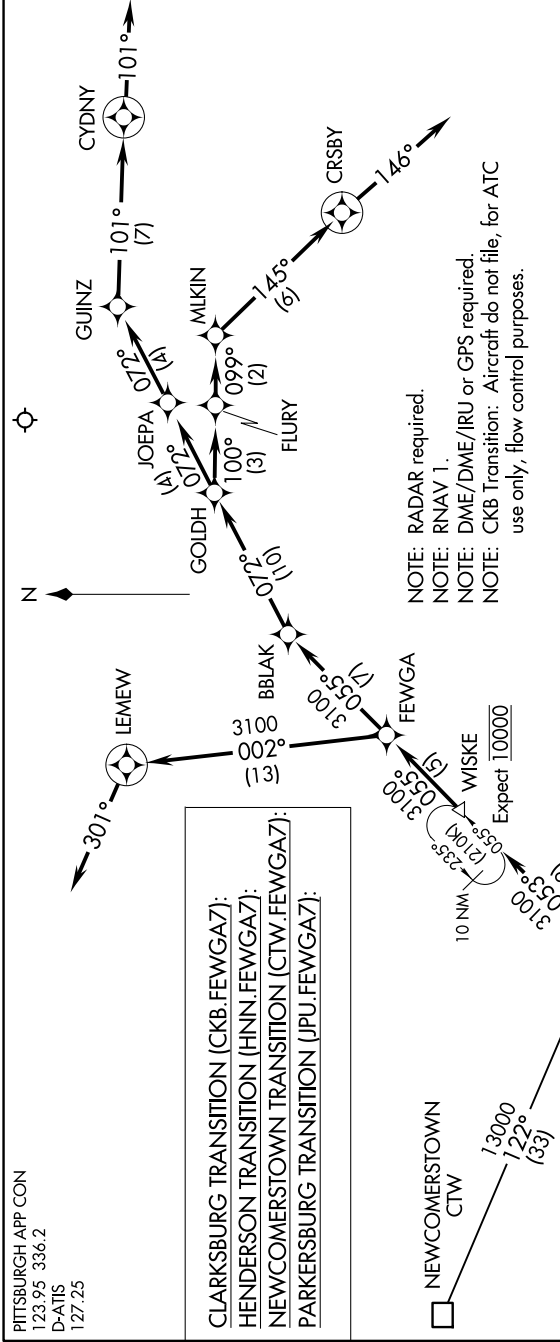


# FEWGA SEVEN ARRIVAL (RNAV)

NE-4, 20 FEB 2025 to 20 MAR 2025

PITTSBURGH APP CON  
123.95 336.2  
D-ATIS  
127.25

CLARKSBURG TRANSITION (CKB.FEWGA7):  
HENGERSON TRANSITION (HNN.FEWGA7):  
NEWCOMERTOWN TRANSITION (CTW.FEWGA7):  
PARKERSBURG TRANSITION (JPU.FEWGA7):



NOTE: RADAR required.  
 NOTE: RNAV 1.  
 NOTE: DME/DME/IRU or GPS required.  
 NOTE: CKB Transition: Aircraft do not file, for ATC use only, flow control purposes.

### ARRIVAL ROUTE DESCRIPTION

From WISKE on track 055° to FEWGA, thence on assigned runway transition.  
 LANDING RWY 10L/10C/10R: From FEWGA on track 002° to LEMMEW, then on heading 301°. Expect radar vectors to final approach course.  
 LANDING RWY 28L/28C/28R: From FEWGA on track 055° to BBLAK, then on track 072° to GOLDH, then on track 072° to JOEPA, then on track 072° to GUINZ, then on track 101° to CYDNY, then on heading 101°. Expect radar vectors to final approach course.  
 LANDING RWY 32: From FEWGA on track 055° to BBLAK, then on track 072° to GOLDH, then on track 100° to FLURY, then on track 099° to MLKIN, then on track 145° to CRSBY, then fly heading 146°. Expect radar vectors to final approach course.

NOTE: Chart not to scale