

LOC/DME I-TQW <b>111.3</b> Chan <b>50</b>	APP CRS <b>325°</b>	Rwy ldg <b>7466</b> TDZE <b>1124</b> Apt Elev <b>1203</b>
---	------------------------	---

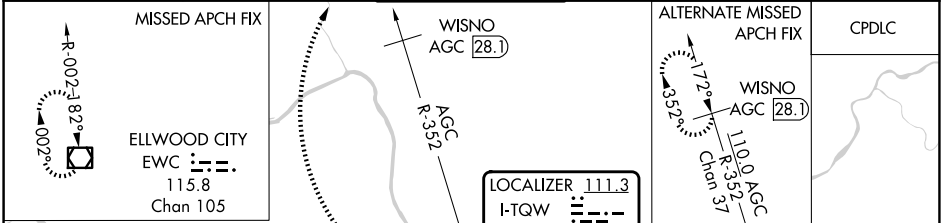
# ILS or LOC RWY 32

PITTSBURGH INTL (PIT)

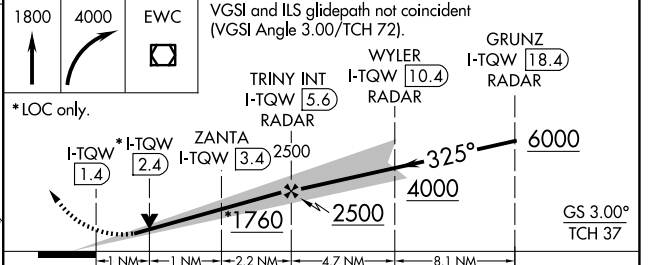
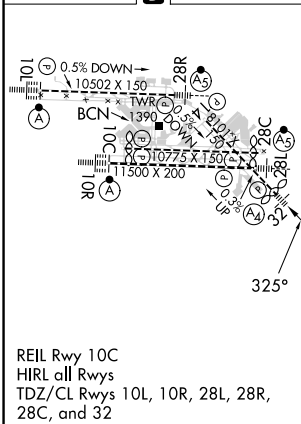
**⚠** DME or RADAR required. Inop table does not apply to S-ILS 32. For inop ALS, increase S-LOC 32 Cat E visibility to 1 $\frac{1}{2}$  SM and ZANTA fix minimums S-LOC 32 Cat E visibility to RVR 6000.

**MALS** MISSED APPROACH: Climb to 1800 then climbing right turn to 4000 direct EWC VOR/DME and hold.

D-ATIS ARR <b>127.25</b> DEP <b>135.9</b>	PITTSBURGH APP CON <b>123.95 360.8</b>	PITTSBURGH TOWER <b>128.3 291.7</b>	GND CON SOUTH <b>121.9 348.6</b> NORTH <b>127.8 348.6</b>	CLNC DEL <b>126.75 353.7</b>
---	---	--	---	---------------------------------



ELEV 1203	<b>D</b>	TDZE 1124
-----------	----------	-----------



CATEGORY	A	B	C	D	E
S-ILS 32	1324/40 200 (200- $\frac{3}{4}$ )				
S-LOC 32	1760/40	636 (600- $\frac{3}{4}$ )	1760-1 $\frac{1}{2}$	636 (600-1 $\frac{1}{2}$ )	
<b>C</b> CIRCLING	1760-1	557 (600-1)	1880-2 677 (700-2)	1880-2 $\frac{1}{4}$ 677 (700-2 $\frac{1}{4}$ )	1880-2 $\frac{1}{2}$ 677 (700-2 $\frac{1}{2}$ )
ZANTA FIX MINIMUMS (DME REQUIRED)					
S-LOC 32	1520/40	396 (400- $\frac{3}{4}$ )	1520/45	396 (400- $\frac{3}{8}$ )	
<b>C</b> CIRCLING	1700-1	497 (500-1)	1880-2 677 (700-2)	1880-2 $\frac{1}{4}$ 677 (700-2 $\frac{1}{4}$ )	1880-2 $\frac{1}{2}$ 677 (700-2 $\frac{1}{2}$ )

NE-4, 20 FEB 2025 to 20 MAR 2025

NE-4, 20 FEB 2025 to 20 MAR 2025