

(CUTTA.JESEY5) 24361

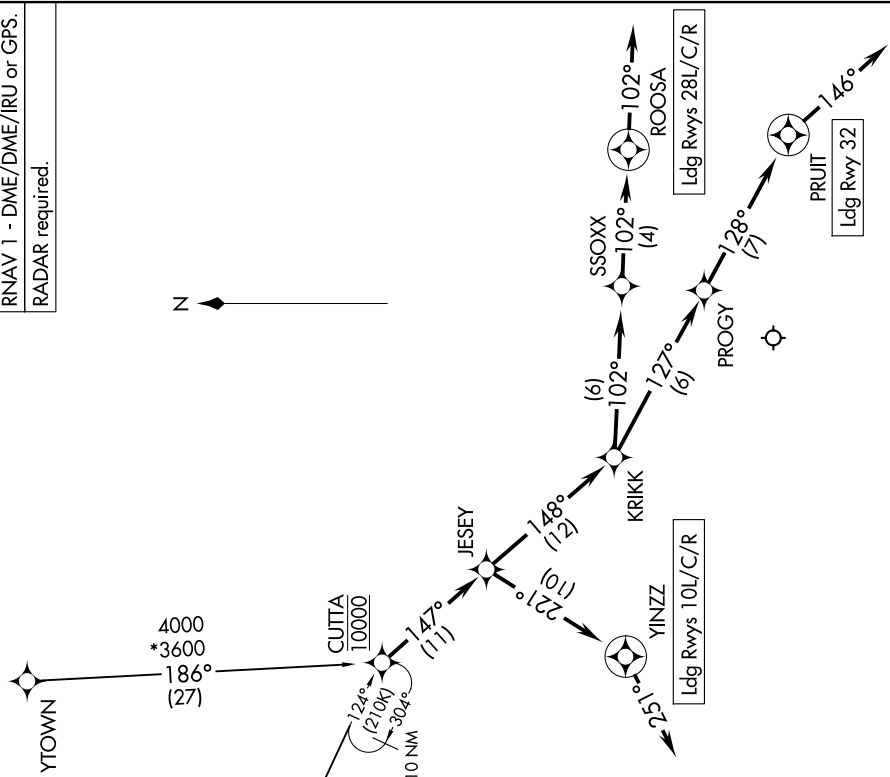
AL-570 (FAA)

PITTSBURGH INTL (PIT)
PITTSBURGH, PENNSYLVANIA

JESEY FIVE ARRIVAL (RNAV)

RNAV 1 - DME/DME/IRU or GPS.
RADAR required.

NE-4, 20 FEB 2025 to 20 MAR 2025



ARRIVAL ROUTE DESCRIPTION

GRIVY TRANSITION (GRIVY.JESEY5) YTOWN TRANSITION (YTOWN.JESEY5)

From CUTTA on track 147° to JESEY.

LANDING RUNWAYS 10L/C/R: From JESEY on track 221° to YINZZ, then on heading 251°. Expect RADAR vectors to final approach course.

LANDING RUNWAYS 28L/C/R: From JESEY on track 148° to KRIKK, then on track 102° to SSOXX, then on track 102° to ROOSA, then on heading 102°. Expect RADAR vectors to final approach course.

LANDING RUNWAY 32: From JESEY on track 148° to KRIKK, then on track 127° to PROGY, then on track 128° to PRUIT, then on heading 146°. Expect RADAR vectors to final approach course.

NOTE: Chart not to scale.

NE-4, 20 FEB 2025 to 20 MAR 2025

JESEY FIVE ARRIVAL (RNAV)

(CUTTA.JESEY5) 26DEC24

PITTSBURGH, PENNSYLVANIA
PITTSBURGH INTL (PIT)