

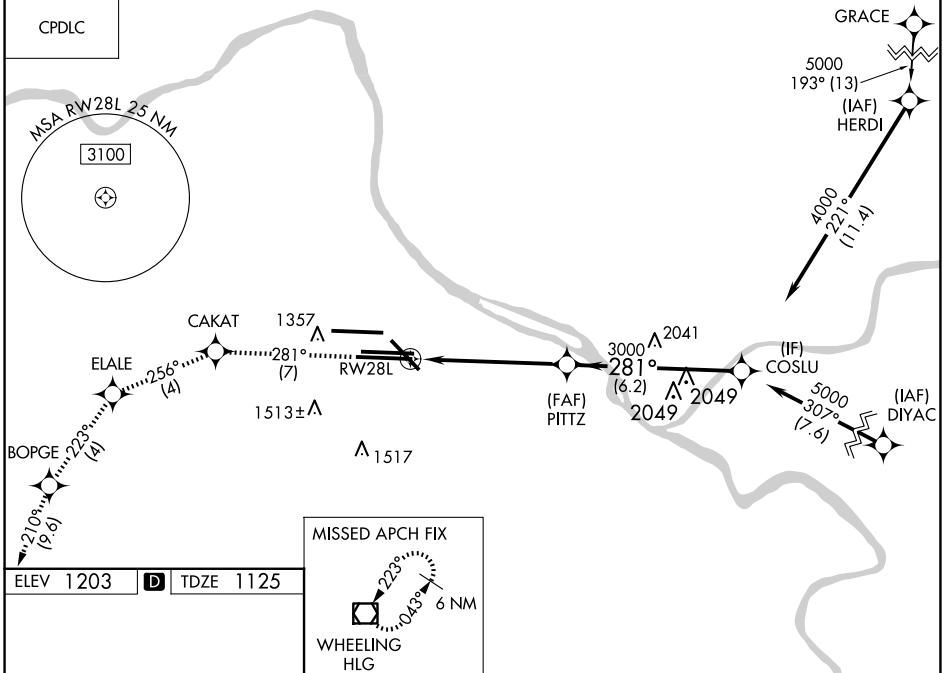
RNAV (RNP) Z RWY 28L

PITTSBURGH INTL (PIT)

APP CRS	Rwy Idg	11500
281°	TDZE	1125
	Apt Elev	1203

RNP AR APCH - GPS.	MALSR	MISSED APPROACH: Climb to 4000 on track 281° to CAKAT and track 256° to ELALE and track 223° to BOPGE and track 210° to HLG VOR/DME and hold.
For uncompensated Baro-VNAV systems, procedure NA below -18°C or above 54°C. Simultaneous approach authorized. For inop ALS, increase RNP 0.13 all Cats visibility to RVR 6000.		

D-ATIS	PITTSBURGH APP CON	PITTSBURGH TOWER	GND CON	CLNC DEL
ARR 127.25	123.95 360.8	128.3 291.7	SOUTH 121.9 348.6	126.75 353.7
DEP 135.9			NORTH 127.8 348.6	



NE-4, 20 FEB 2025 to 20 MAR 2025

NE-4, 20 FEB 2025 to 20 MAR 2025

4000	tr 281°	CAKAT	tr 256°	ELALE	tr 223°	BOPGE	tr 210°	HLG	COSLU
VGSI and RNAV glidepath not coincident (VGSI Angle 3.00/TCH 70).									
RWY 28L					PITZ 3000 281° 4000 3000				
5.7 NM					6.2 NM				
GP 3.00° TCH 54									
CATEGORY	A		B		C		D		
RNP 0.13 DA			1529/40		404 (400-¾)				
RNP 0.30 DA			1579/45		454 (400-¾)				
AUTHORIZATION REQUIRED									

