

# RNAV (RNP) Z RWY 28R

PITTSBURGH INTL (PIT)

APP CRS	Rwy Idg	<b>10102</b>
<b>281°</b>	TDZE	<b>1174</b>
	Apt Elev	<b>1203</b>

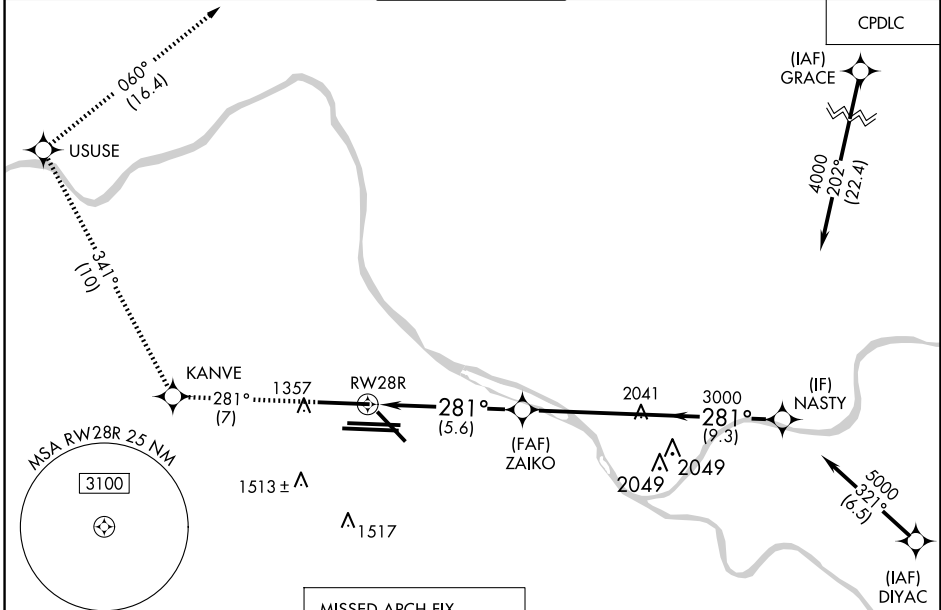
RNP AR APCH - GPS.

Simultaneous approach authorized. For uncompensated Baro-VNAV systems, procedure NA below -18°C or above 54°C. For inop ALS, increase RNP 0.30 all Cats visibility to 1 3/8 SM.

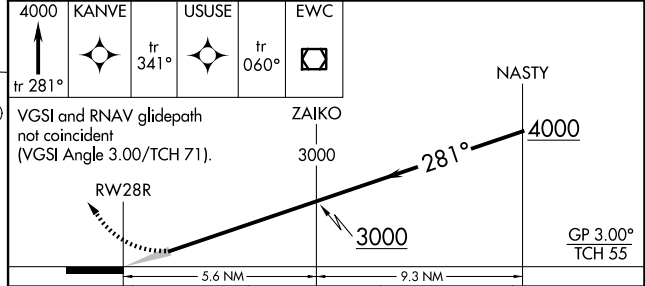
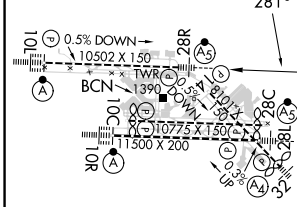
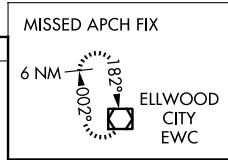
MALSR

MISSED APPROACH: Climb to 4000 on track 281° to KANVE and track 341° to USUSE and track 060° to EWC VOR/DME and hold.

D-ATIS	PITTSBURGH APP CON	PITTSBURGH TOWER	GND CON	CLNC DEL
ARR <b>127.25</b>	<b>123.95 360.8</b>	<b>128.3 291.7</b>	SOUTH <b>121.9 348.6</b>	<b>126.75 353.7</b>
DEP <b>135.9</b>			NORTH <b>127.8 348.6</b>	



ELEV 1203	<b>D</b>	TDZE 1174
-----------	----------	-----------



REIL Rwy 10C  
HIRL all Rwys  
TDZ/CL Rwys 10L, 10R, 28L, 28R, 28C, and 32

CATEGORY	A	B	C	D
RNP 0.30 DA		1675/55	501 (500-1)	

## AUTHORIZATION REQUIRED

NE-4, 20 FEB 2025 to 20 MAR 2025

NE-4, 20 FEB 2025 to 20 MAR 2025