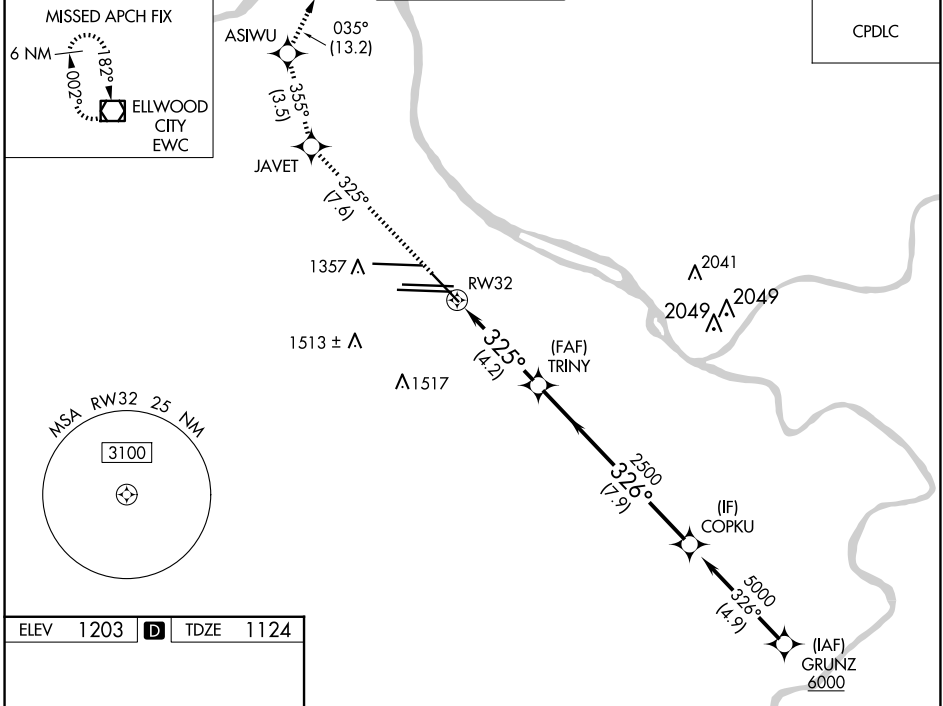


APP CRS 325°	Rwy ldg TDZE Apt Elev	7466 1124 1203
------------------------	-----------------------------	---

RNAV (RNP) Z RWY 32

PITTSBURGH INTL (PIT)

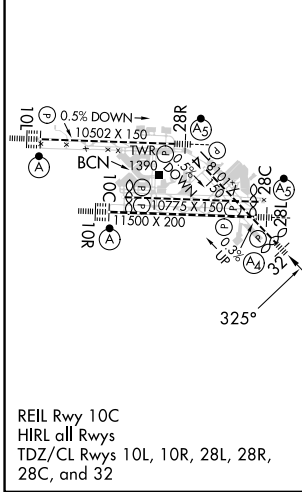
RNP AR APCH - GPS.		MALS	MISSED APPROACH: Climb to 4000 on track 325° to JAVET and track 355° to ASIWU and track 035° to EWC VOR/DME and hold.	
▽ For uncompensated Baro-VNAV systems, procedure NA below -18°C (0°F) or above 54°C (130°F).				
D-ATIS ARR 127.25 DEP 135.9	PITTSBURGH APP CON 123.95 360.8	PITTSBURGH TOWER 128.3 291.7	GND CON SOUTH 121.9 348.6 NORTH 127.8 348.6	CLNC DEL 126.75 353.7



NE-4, 20 FEB 2025 to 20 MAR 2025

NE-4, 20 FEB 2025 to 20 MAR 2025

ELEV 1203	D	TDZE 1124
-----------	----------	-----------



4000	JAVET	ASIWU	EWC
↑	tr 325°	tr 355°	tr 035°
VGSi and RNAV glidepath not coincident (VGSi Angle 3.00/TCH 72).			
RWY 32	TRINY	COPKU	
	2500	5000	
	325°	326°	
	4.2 NM	7.9 NM	
			GP 3.00° TCH 37
CATEGORY	A	B	C
RNP 0.30 DA	1503/40 379 (300-¾)		
AUTHORIZATION REQUIRED			