

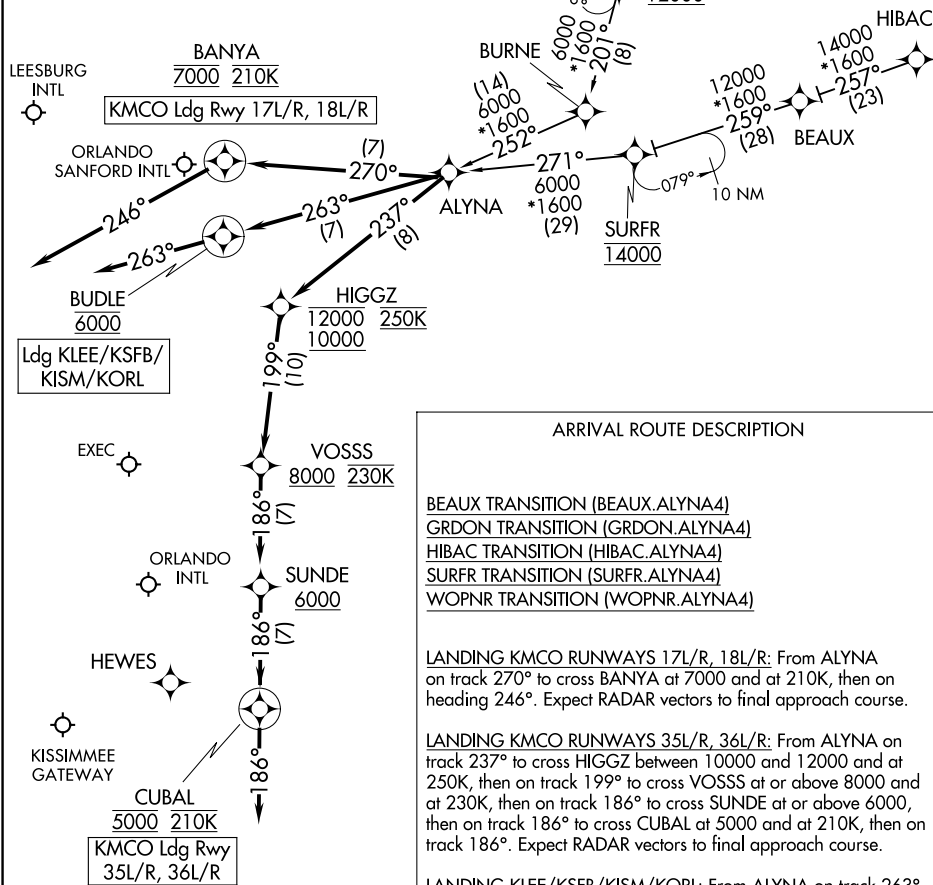
ALYNA FOUR ARRIVAL (RNAV)

ORLANDO, FLORIDA

ORLANDO APP CON
 124.8 307.0
 ISM ATIS
 128.775
 LEE ATIS
 134.325
 MCO D-ATIS ARR
 121.25
 ORL ATIS
 127.25
 SFB ATIS
 125.975

RNAV 1 - DME/DME/IRU or GPS.
 RADAR required.

NOTE: Jet and turboprop aircraft only.
 NOTE: Only HIBAC transition available for filing.
 All other transitions to be assigned by ATC.



ARRIVAL ROUTE DESCRIPTION

- BEAUX TRANSITION (BEAUX.ALYNA4)
- GRDON TRANSITION (GRDON.ALYNA4)
- HIBAC TRANSITION (HIBAC.ALYNA4)
- SURFR TRANSITION (SURFR.ALYNA4)
- WOPNR TRANSITION (WOPNR.ALYNA4)

LANDING KMCO RUNWAYS 17L/R, 18L/R: From ALYNA on track 270° to cross BANYA at 7000 and at 210K, then on heading 246°. Expect RADAR vectors to final approach course.

LANDING KMCO RUNWAYS 35L/R, 36L/R: From ALYNA on track 237° to cross HIGGZ between 10000 and 12000 and at 250K, then on track 199° to cross VOSSS at or above 8000 and at 230K, then on track 186° to cross SUNDE at or above 6000, then on track 186° to cross CUBAL at 5000 and at 210K, then on track 186°. Expect RADAR vectors to final approach course.

LANDING KLEE/KSFB/KISM/KORL: From ALYNA on track 263° to cross BUDLE at 6000, then on heading 263°. Expect RADAR vectors to final approach course.

NOTE: Chart not to scale.

ALYNA FOUR ARRIVAL (RNAV)

(ALYNA.ALYNA4) 25JAN24

ORLANDO, FLORIDA

SE-3, 20 FEB 2025 to 20 MAR 2025

SE-3, 20 FEB 2025 to 20 MAR 2025