


# BITHO SEVEN ARRIVAL

ORLANDO, FLORIDA

ORLANDO APP CON  
 128.375 338.2  
 ISM ATIS  
 128.775  
 KCOF ATIS  
 119.175 273.5  
 MLB ATIS  
 132.55  
 MCO D-ATIS ARR  
 121.25  
 TIX ATIS  
 120.625

ORMOND BEACH  
 112.6 OMN   
 Chan 73

OCALA  
 113.7 OCF   
 Chan 84

ORLANDO  
 112.2 ORL   
 Chan 59

### LAMMA TURBOJET VERTICAL NAVIGATION PLANNING INFORMATION

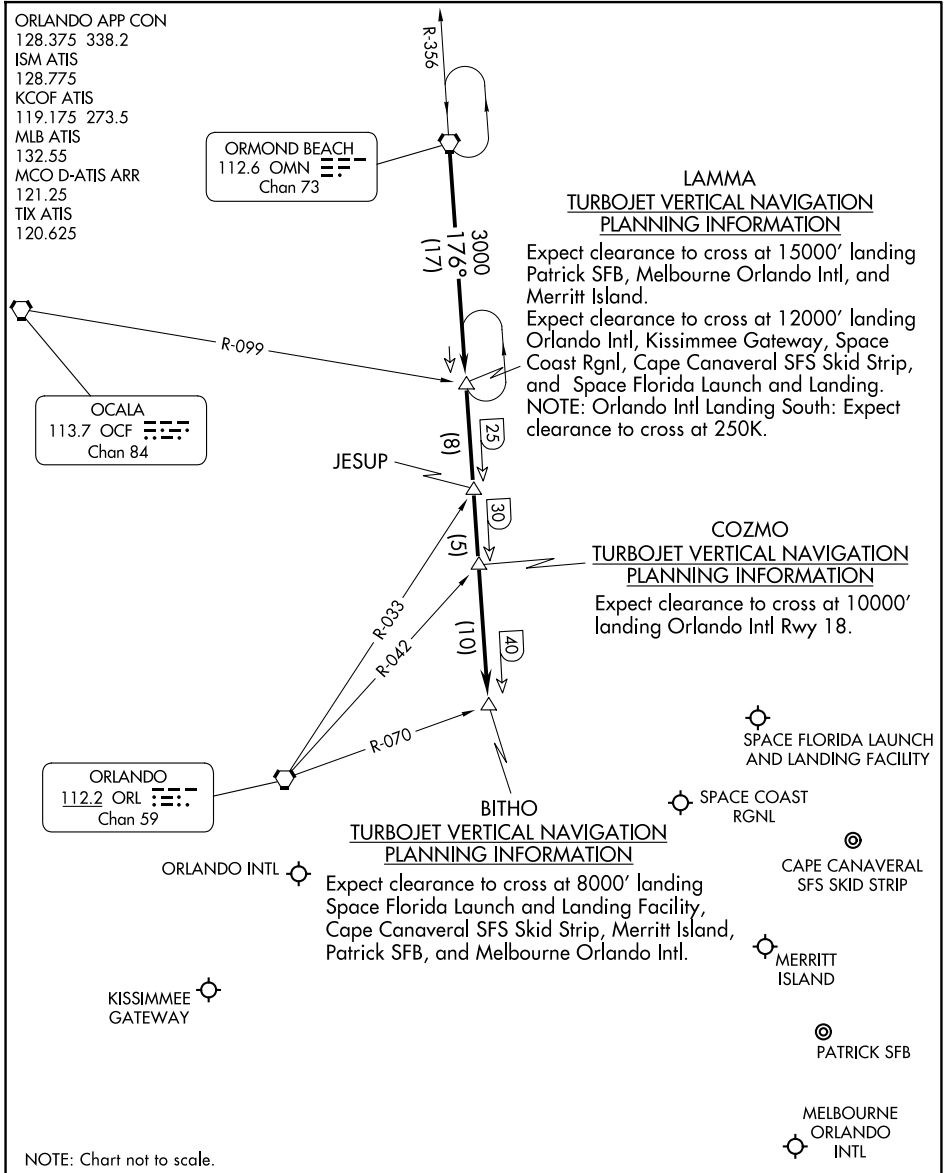
Expect clearance to cross at 15000' landing Patrick SFB, Melbourne Orlando Intl, and Merritt Island.  
 Expect clearance to cross at 12000' landing Orlando Intl, Kissimmee Gateway, Space Coast Rgnl, Cape Canaveral SFS Skid Strip, and Space Florida Launch and Landing.  
 NOTE: Orlando Intl Landing South: Expect clearance to cross at 250K.

### COZMO TURBOJET VERTICAL NAVIGATION PLANNING INFORMATION

Expect clearance to cross at 10000' landing Orlando Intl Rwy 18.

### BITHO TURBOJET VERTICAL NAVIGATION PLANNING INFORMATION

Expect clearance to cross at 8000' landing Space Florida Launch and Landing Facility, Cape Canaveral SFS Skid Strip, Merritt Island, Patrick SFB, and Melbourne Orlando Intl.



SE-3, 20 FEB 2025 to 20 MAR 2025

SE-3, 20 FEB 2025 to 20 MAR 2025

NOTE: Chart not to scale.

## ARRIVAL ROUTE DESCRIPTION

From over OMN VORTAC via OMN R-176 to BITHO INT. Expect RADAR vectors to final approach course after BITHO INT.