

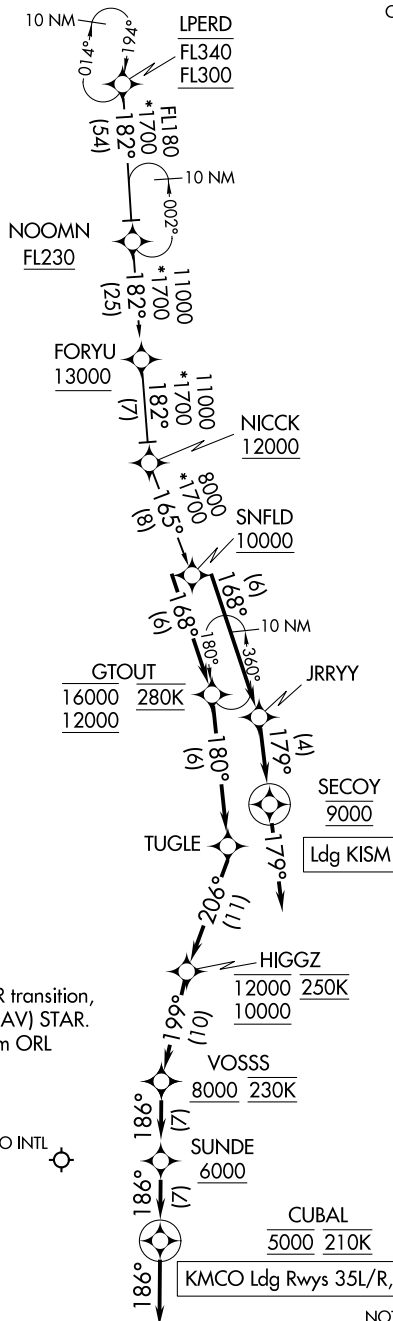
SNFLD THREE ARRIVAL (RNAV)

ORLANDO, FLORIDA

RNAV 1- DME/DME/IRU or GPS.

RADAR required.

ORLANDO APP CON
 128.375 338.2
 ISM ATIS
 128.775
 MCO D-ATIS ARR
 121.25



NOTE: Jet aircraft only.
 NOTE: Landing North use runway 35R transition,
 landing South use GTOUT (RNAV) STAR.
 Expect runway assignment from ORL
 approach prior to SNFLD.



(NARRATIVE ON FOLLOWING PAGE)

NOTE: Chart not to scale.

SNFLD THREE ARRIVAL (RNAV)

ORLANDO, FLORIDA

ARRIVAL ROUTE DESCRIPTION

LANDING KMCO RUNWAYS 35L/R, 36L/R: From SNFLD on track 168° to cross GTOUT between 12000 and 16000 and at 280K, then on track 180° to TUGLE, then on track 206° to cross HIGGZ between 10000 and 12000 and at 250K, then on track 199° to cross VOSSS at or above 8000 and at 230K, then on track 186° to cross SUNDE at or above 6000, then on track 186° to cross CUBAL at 5000 and at 210K, then on track 186°. Expect RADAR vectors to final approach course.

LANDING KISM: From SNFLD on track 168° to JRRYY, then on track 179° to cross SECOY at 9000, then on track 179°. Expect RADAR vectors to final approach course.

FORYU TRANSITION (FORYU.SNFLD3)

LPERD TRANSITION (LPERD.SNFLD3)

SE-3, 20 FEB 2025 to 20 MAR 2025

SE-3, 20 FEB 2025 to 20 MAR 2025