

WAAS CH 58003 W14A	APP CRS 136°	Rwy Idg 5502 TDZE 583 Apt Elev 583
--	------------------------	---

RNAV (GPS) RWY 14

FREEMAN MUNI (SE.R)

RNP APCH - GPS.

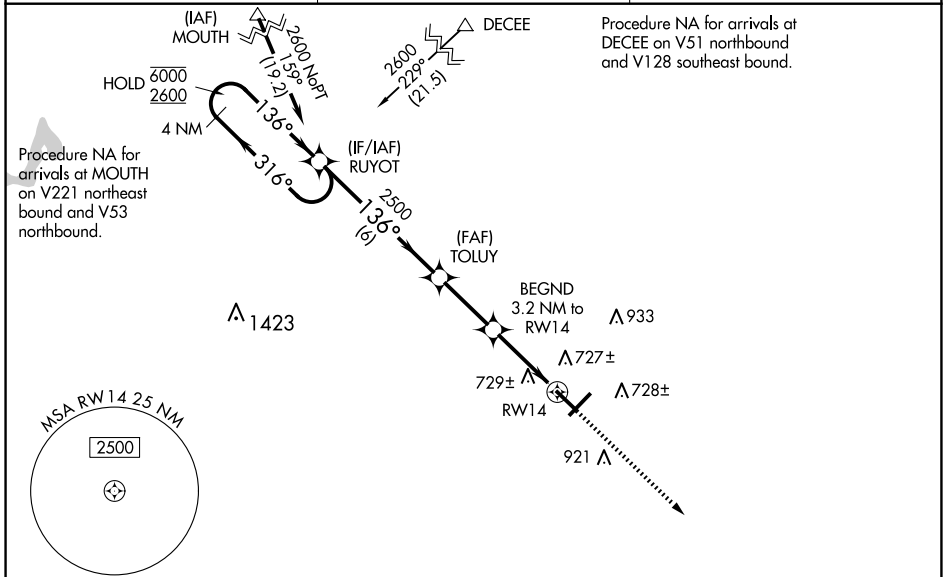
NA Baro-VNAV and VDP NA when using Louisville Muhammad Ali Intl altimeter setting. Rwy 14 helicopter visibility reduction below 3/4 SM NA. For uncompensated Baro-VNAV systems, LNAV/VNAV NA below -16°C or above 54°C. When local altimeter setting not received, use Louisville Muhammad Ali Intl altimeter setting and increase all DA 117 feet and all MDA 120 feet; increase LPV and LNAV/VNAV all Cats and LNAV and Circling Cats C/D visibility 1/4 SM.

MISSED APPROACH:
Climb to 2400 direct ZEKAM and hold.

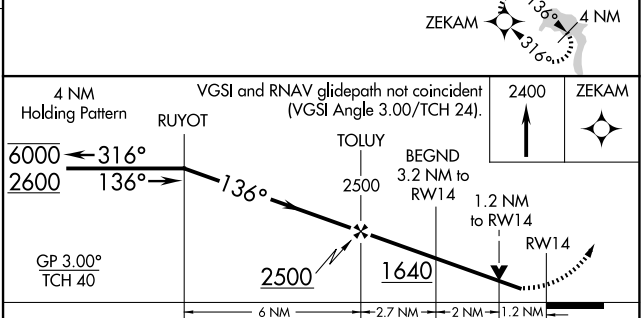
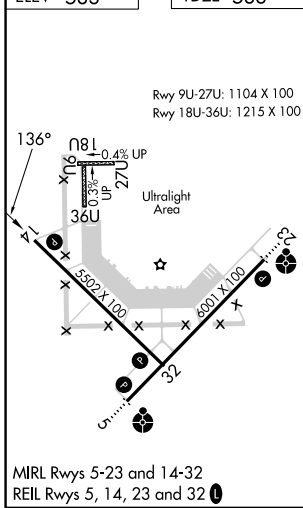
AWOS-3
119.425

LOUISVILLE APP CON
132.075 327.0

UNICOM
122.8 (CTAF)



ELEV 583	TDZE 583
-----------------	-----------------



CATEGORY	A	B	C	D
LPV DA		860-7/8	277 (300-7/8)	
LNAV/VNAV DA		1037-13/8	454 (500-13/8)	
LNAV MDA	980-1	397 (400-1)	980-1 1/8	397 (400-1 1/8)
CIRCLING	1040-1 457 (500-1)	1100-1 517 (600-1)	1300-2 717 (800-2)	1300-2 1/4 717 (800-2 1/4)

EC-2, 20 FEB 2025 to 20 MAR 2025

EC-2, 20 FEB 2025 to 20 MAR 2025