

| | |
|------------------------|------------------------|
| APP CRS 183° | Rwy Idg 5000 |
| | TDZE 372 |
| | Apt Elev 372 |

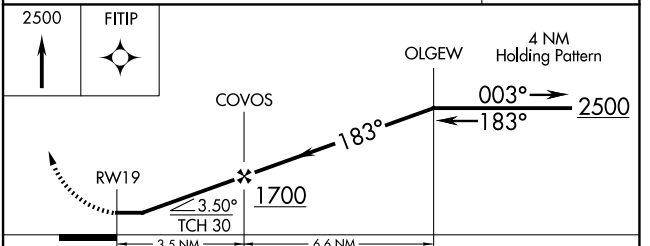
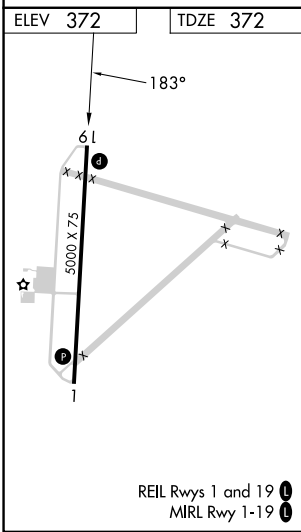
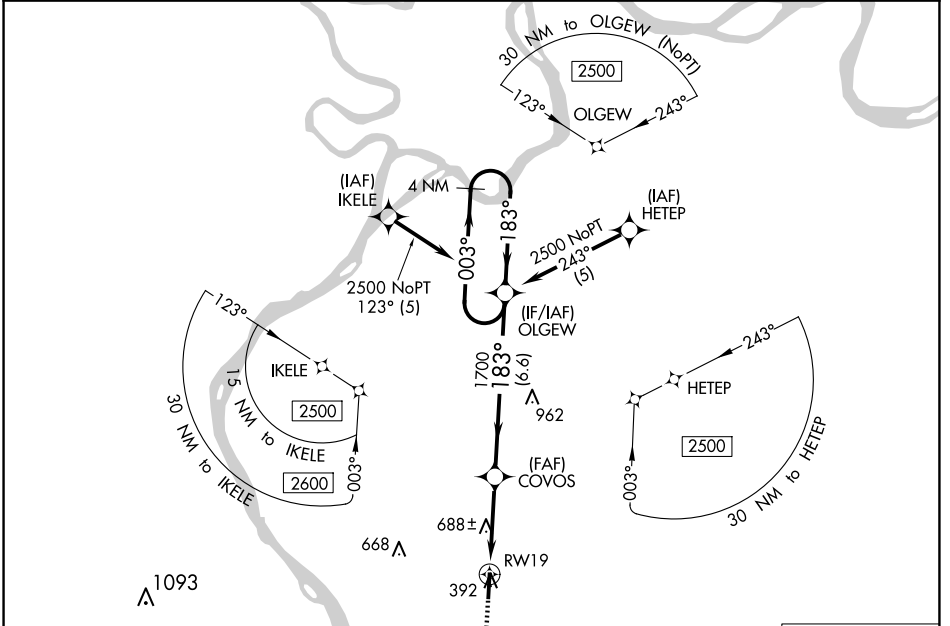
RNAV (GPS) RWY 19

STURGIS MUNI (TWT)

NA DME/DME RNP-0.3 NA. Helicopter visibility reduction below 3/4 SM NA. When local altimeter setting not received, use Henderson altimeter setting and increase all MDA 60 feet, increase LNAV Cats C and D visibility 1/8 mile and Circling Cat C 1/4 mile.

MISSED APPROACH: Climb to 2500 direct FITIP and hold.

| | | |
|--------------------------|--|---------------------------------|
| AWOS-3 118.775 | EVANSVILLE APP CON ★ 124.025 290.9 | UNICOM 122.8 (CTAF) 0 |
|--------------------------|--|---------------------------------|



| CATEGORY | A | B | C | D |
|-------------------|----------------------|-----------------------|-------------------------------|-------------------------------|
| LNAV MDA | 940-1 | 568 (600-1) | 940-1 5/8 | 568 (600-1 5/8) |
| C CIRCLING | 940-1 568 (600-1) | 1000-1 628 (700-1) | 1000-1 3/4 628 (700-1 3/4) | 1120-2 1/2 748 (800-2 1/2) |

SE-1, 20 FEB 2025 to 20 MAR 2025

SE-1, 20 FEB 2025 to 20 MAR 2025