

HI-ILS Y or LOC Y RWY 14

LOC I-GPT 110.9	APCH CRS 137°	Rwy Idg TDZE Arpt Elev	9002 27 28
---------------------------	-------------------------	------------------------------	---------------------------------------

[USAF]

GULFPORT-BILOXI INTL (KGPT)

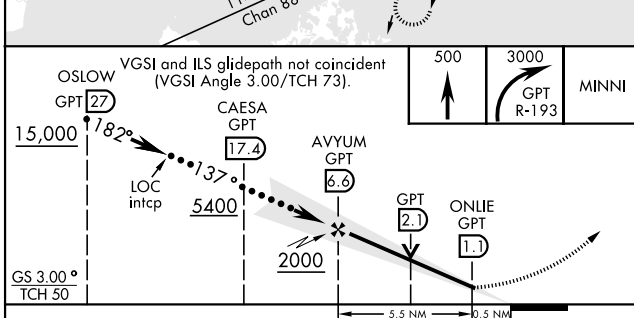
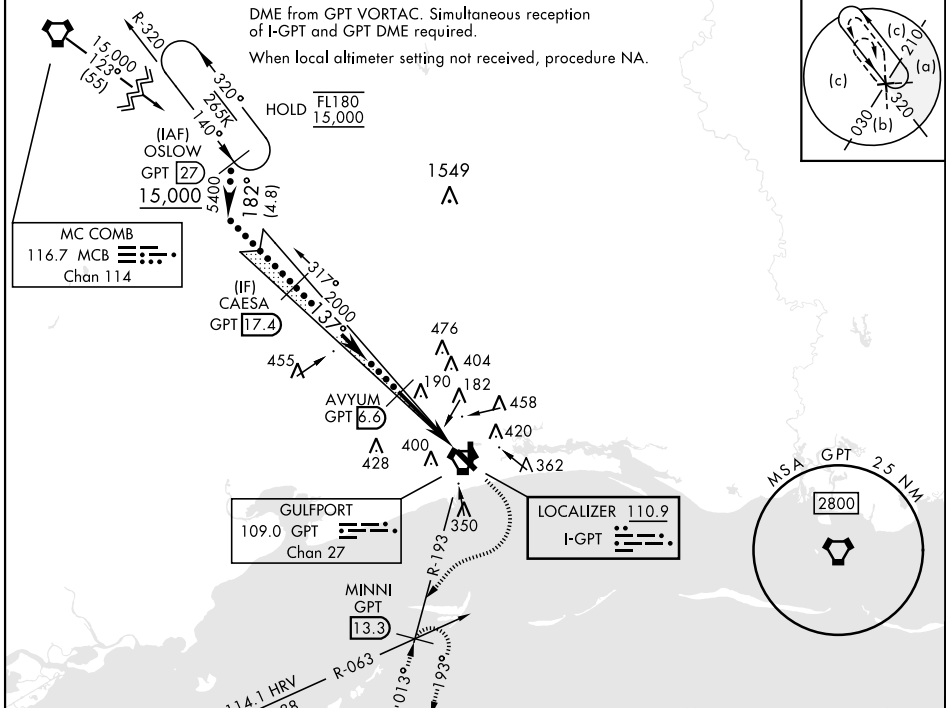
RADAR or DME required

- ▼ * When ALS inop, increase RVR to 40.
RVR 18 authorized with use of FD or AP or HUD to DA.
- ▲ ** When ALS inop, increase vis to 1½ miles.

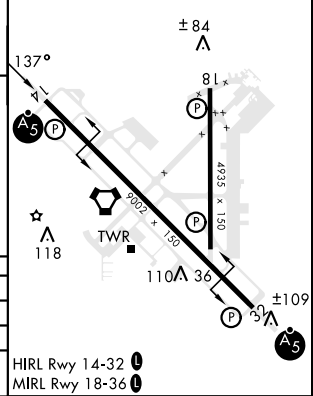


MISSED APPROACH: Climb to 500, then climbing right turn to 3000 on GPT VORTAC R-193 to MINNI/ GPT 13.3 DME and hold.

ATIS ★ 119.45	GULFPORT APP CON 124.6 354.1 130°-309° 127.5 254.25 310°-129°	GULFPORT TOWER ★ 123.7 CTAF 0 339.8	GND CON 120.4 348.6	UNICOM 122.95	ASR
-------------------------	---	--	-------------------------------	-------------------------	-----



ELEV 28	TDZE 27
---------	---------



CATEGORY	C	D	E
S-ILS 14 *	227/24	200 (200-½)	
S-LOC 14 **	560/55	533 (600-1)	
CIRCLING	820-2¼ 792 (800-2¼)	820-2½ 792 (800-2½)	820-2¾ 792 (800-2¾)

HI-ILS Y or LOC Y RWY 14

SC-4, 20 FEB 2025 to 20 MAR 2025

SC-4, 20 FEB 2025 to 20 MAR 2025