

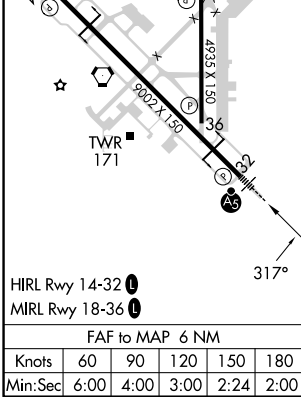
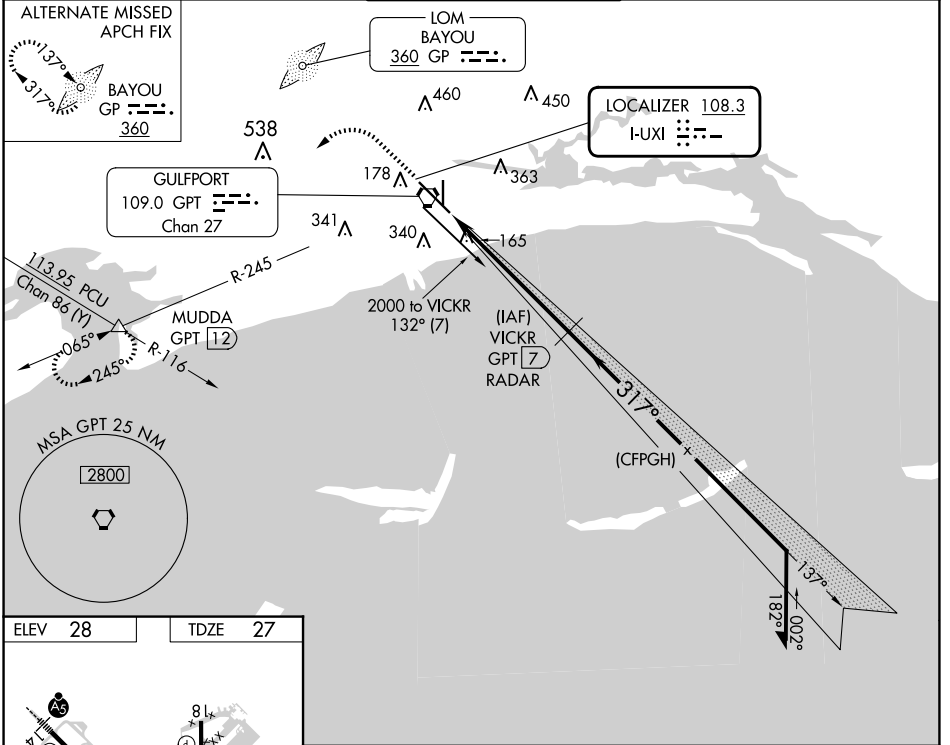
LOC I-UXI 108.3	APP CRS 317°	Rwy Idg TDZE Apt Elev	9002 27 28
---------------------------	------------------------	-----------------------------	---------------------------------------

ILS Z or LOC Z RWY 32

GULFPORT-BILOXI INTL (GPT)

DME or RADAR required, except DME required when control tower closed.		MALSR 	MISSED APPROACH: Climb to 500 then climbing left turn to 2000 on GPT VORTAC R-245 to MUDDA INT/GPT 12 DME and hold.
<p> Rwy 32 helicopter visibility reduction below RVR 4000 NA. Inop table does not apply to S-ILS 32. DME from GPT VORTAC. Simultaneous reception of I-UXI and GPT DME required. For inop ALS, increase S-LOC 32 all Cats ASR visibility to RVR 5500.</p>			

ATIS 119.45	GULFPORT APP CON * 127.5 254.25	GULFPORT TOWER * 123.7 (CTAF) 0 339.8	GND CON 120.4 348.6	UNICOM 122.95
-----------------------	---	---	-------------------------------	-------------------------



500	2000	GPT R-245	MUDDA	VICKR GPT 7 RADAR	VGSI and ILS glidepath not coincident (VGSI Angle 3.00/TCH 72).																								
<p>GS unusable when control tower closed. Only localizer minimums authorized during this period.</p>					Remain within 15 NM																								
					GS 3.00° TCH 55																								
<table border="1"> <thead> <tr> <th>CATEGORY</th> <th>A</th> <th>B</th> <th>C</th> <th>D</th> <th>E</th> </tr> </thead> <tbody> <tr> <td>S-ILS 32</td> <td></td> <td>277/40</td> <td>250 (300-¾)</td> <td></td> <td></td> </tr> <tr> <td>S-LOC 32</td> <td></td> <td>380/40</td> <td>353 (400-¾)</td> <td></td> <td></td> </tr> <tr> <td> CIRCLING</td> <td>520-1 492 (500-1)</td> <td>640-1 612 (700-1)</td> <td>760-2 732 (800-2)</td> <td>760-2¼ 732 (800-2¼)</td> <td>760-2½ 732 (800-2½)</td> </tr> </tbody> </table>						CATEGORY	A	B	C	D	E	S-ILS 32		277/40	250 (300-¾)			S-LOC 32		380/40	353 (400-¾)			CIRCLING	520-1 492 (500-1)	640-1 612 (700-1)	760-2 732 (800-2)	760-2¼ 732 (800-2¼)	760-2½ 732 (800-2½)
CATEGORY	A	B	C	D	E																								
S-ILS 32		277/40	250 (300-¾)																										
S-LOC 32		380/40	353 (400-¾)																										
CIRCLING	520-1 492 (500-1)	640-1 612 (700-1)	760-2 732 (800-2)	760-2¼ 732 (800-2¼)	760-2½ 732 (800-2½)																								

SC-4, 20 FEB 2025 to 20 MAR 2025

SC-4, 20 FEB 2025 to 20 MAR 2025