

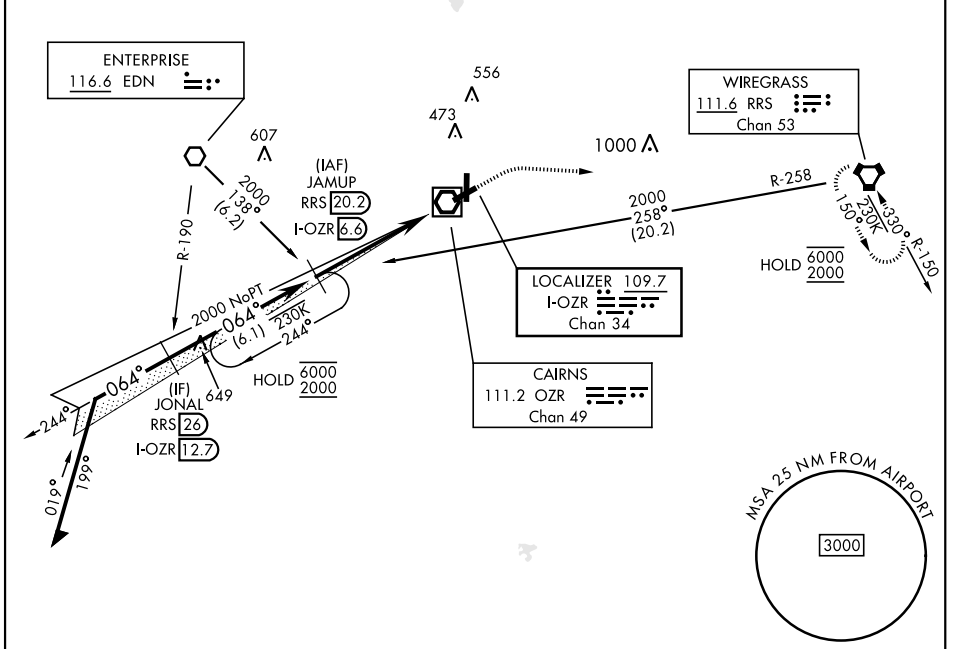
# ILS or LOC RWY 6

LOC/DME I-OZR <b>109.7</b> Chan <b>34</b>	APCH CRS <b>064°</b>	Rwy Idg TDZE Arprt Elev <b>4546</b> <b>298</b> <b>301</b>
---	-------------------------	--

[USA]

CAIRNS AAF (KOZR)

RADAR or DME required *When ALS inop, increase RVR to 40, vis to 3/4 mile. **When ALS inop, increase CAT AB RVR to 55, vis to 1 mile, CAT CD vis to 1 3/8 miles.		MALSR 	MISSED APPROACH: Climb to 800 then climbing right turn to 2000 direct RRS VORTAC and hold; or when directed by ATC, climb to 800 then climbing left turn to 2000 heading 290° within 10 NM (RADAR required).		
ATIS <b>111.2</b> <b>316.15</b>	APP CON ★ 021°-120° <b>125.4</b> <b>327.125</b> 121°-219° <b>133.75</b> <b>270.35</b> 220°-340° <b>133.45</b> <b>239.275</b> 341°-020° <b>121.1</b> <b>319.25</b>	TOWER ★ <b>135.2</b> (CTAF) <b>248.55</b>	GND CON ★ <b>121.9</b> <b>288.25</b>	CLNC DEL ★ <b>118.075</b> <b>380.1</b>	



SE-4, 20 FEB 2025 to 20 MAR 2025

SE-4, 20 FEB 2025 to 20 MAR 2025

Remain within 10 NM JAMUP RRS <b>20.2</b> I-OZR <b>6.6</b> GS 2.70° TCH 57'	800 	2000 	RRS 	ELEV 301	TDZE 298
	CATEGORY   A   B   C   D				CHINOOK HILL PAD TWR 81 150 5025 x 36 4546 x 150 36 064°
S-ILS 6*	498/24		200	(200-1/2)	
S-LOC 6**	780/24	482 (500-1/2)	780/50	482	(500-1)
	780-1	820-1	900-1 1/2	900-2	
	479 (500-1)	519 (600-1)	599 (600-1 1/2)	599 (600-2)	
			HIRL Rwy 6-24		MIRL Rwy 18-36

# ILS or LOC RWY 6