

RNAV (GPS) RWY 36

WAAS CH 63110 W36A	APCH CRS 004°	Rwy Idg TDZE Arprt Elev	5025 298 301
--	-------------------------	-------------------------------	---

[USA]

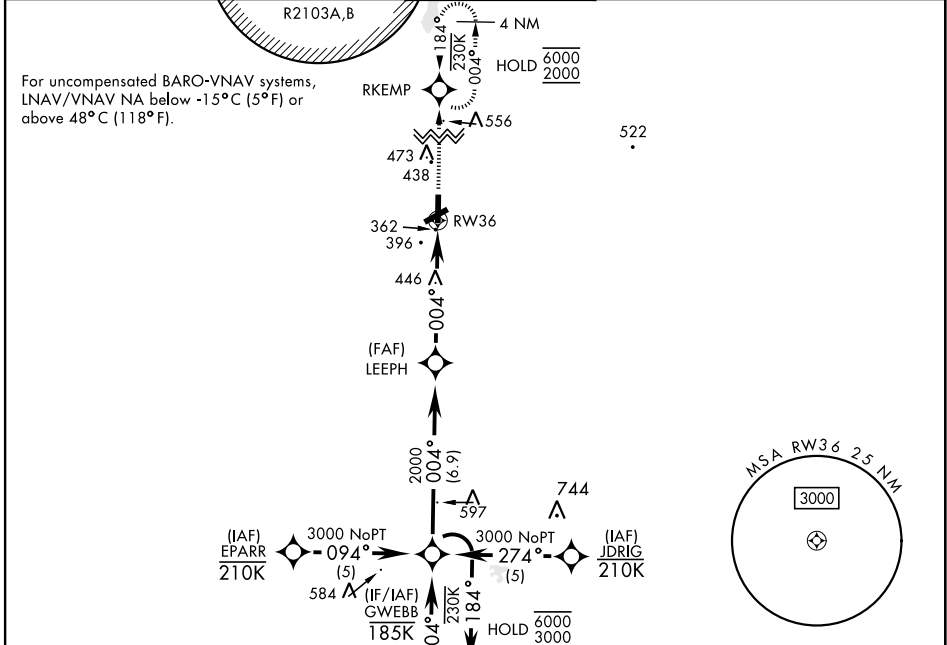
CAIRNS AAF (KOZR)

RNP APCH - GPS

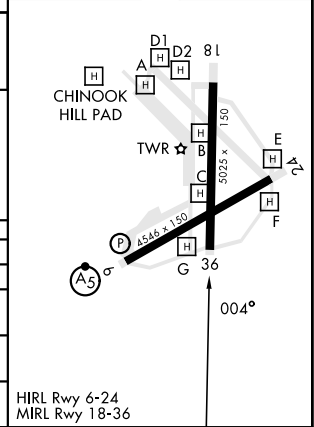
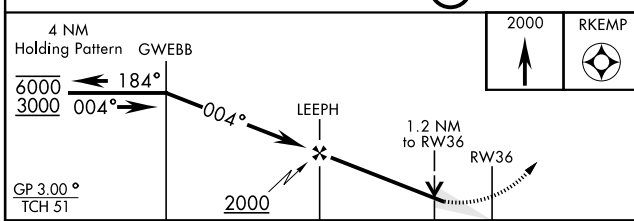
MISSED APPROACH: Climb to 2000 direct RKEMP and hold.

▼
* Circling visibility reduction by helicopters not authorized.

ATIS 111.2 316.15	APP CON ★ 021°-120° 125.4 327.125 121°-219° 133.75 270.35 220°-340° 133.45 239.275 341°-020° 121.1 319.25	TOWER ★ 135.2 (CTAF) 248.55	GND CON ★ 121.9 288.25	CLNC DEL ★ 118.075 380.1
---------------------------------------	---	---	--	--



ELEV	301	TDZE	298
------	-----	------	-----



CATEGORY	A	B	C	D
LPV DA	548-¾	250	(300-¾)	
LNAV/VNAV DA	557-¾	259	(300-¾)	
LNAV MDA	740-1	442 (500-1)	740-1½	442 (500-1½)
CIRCLING*	780-1 479 (500-1)	820-1 519 (600-1)	900-1½ 599 (600-1½)	900-2 599 (600-2)

HIRL Rwy 6-24
MIRL Rwy 18-36

RNAV (GPS) RWY 36

SE-4, 20 FEB 2025 to 20 MAR 2025

SE-4, 20 FEB 2025 to 20 MAR 2025