


FORT NOVOSHEL, ALABAMA

# RNAV (GPS) RWY 6

WAAS CH <b>50537</b> <b>W06A</b>	APCH CRS <b>064°</b>	Rwy Idg TDZE Arprt Elev <b>4546</b> <b>298</b> <b>301</b>	[USA]	CAIRNS AAF (KOZR)
--	-------------------------	--	-------	-------------------

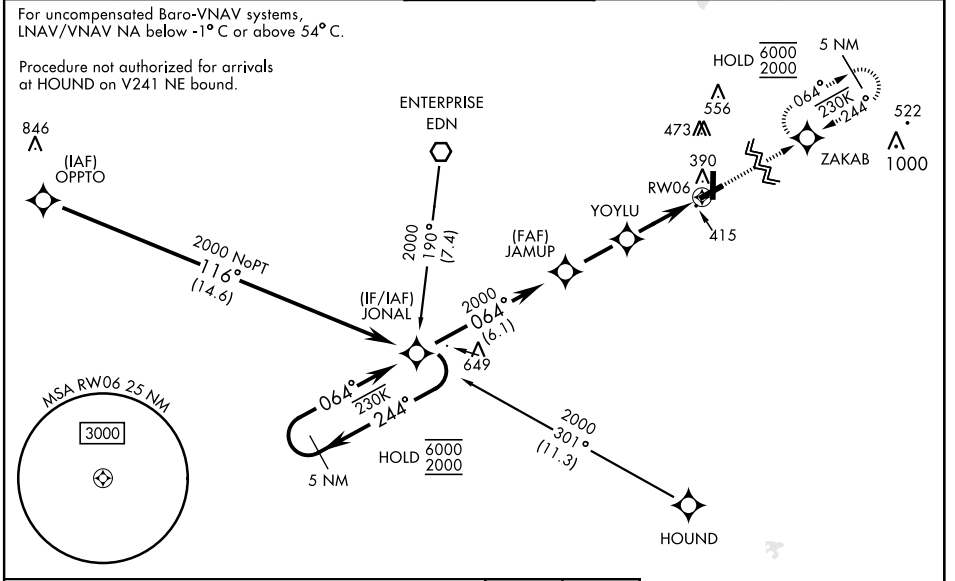
RNP APCH - GPS

▼ \* When ALS inop, increase RVR to 40, vis to 3/4 mile.  
 \*\* When ALS inop, increase RVR to 45, vis to 7/8 mile.  
 \*\*\* When ALS inop, increase CAT AB RVR to 55, vis to 1 mile;  
 CAT CD RVR to 60, vis to 1 1/2 miles.

MALSRL 

MISSED APPROACH: Climb to 2000 direct ZAKAB and hold.

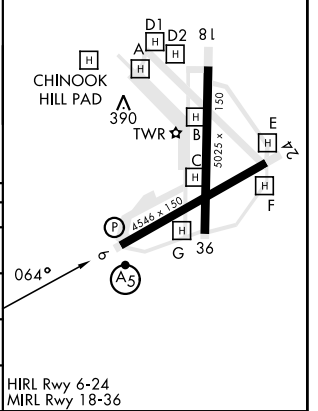
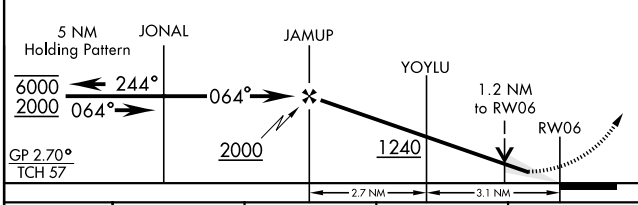
ATIS <b>111.2</b> <b>316.15</b>	APP CON * 021°-120° <b>125.4</b> <b>327.125</b> 121°-219° <b>133.75</b> <b>270.35</b> 220°-340° <b>133.45</b> <b>239.275</b> 341°-020° <b>121.1</b> <b>319.25</b>	TOWER * <b>135.2</b> (CTAF) <b>248.55</b>	GND CON * <b>121.9</b> <b>288.25</b>	CLNC DEL* <b>118.075</b> <b>380.1</b>
---------------------------------------	---	---	--	---



SE-4, 20 FEB 2025 to 20 MAR 2025

SE-4, 20 FEB 2025 to 20 MAR 2025

		ELEV 301	TDZE 298
--	--	----------	----------



CATEGORY	A	B	C	D
LPV DA*	498/24		200	(200-1/2)
LNAV/VNAV DA**	585/24		287	(300-1/2)
LNAV MDA***	680/24	382 (400-1/2)	680/35	382 (400-5/8)
CIRCLING	780-1 479 (500-1)	820-1 519 (600-1)	900-1 1/2 599 (600-1 1/2)	900-2 599 (600-2)

FORT NOVOSHEL, ALABAMA 31° 17' N-85° 43' W CAIRNS AAF (KOZR)

Amdt 3 26DEC24

# RNAV (GPS) RWY 6