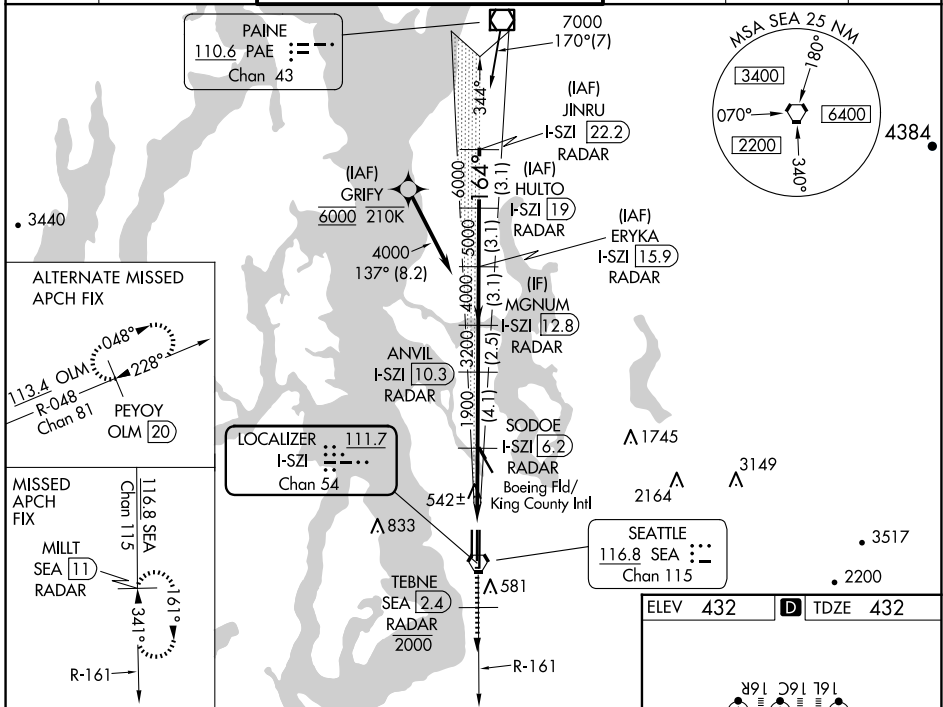


|   |                        |   |             |
|---|------------------------|---|-------------|
| LOC/DME I-SZI<br><b>111.7</b><br>Chan <b>54</b> | APP CRS<br><b>164°</b> | Rwy Idg<br>TDZE <b>430</b><br>Apt Elev <b>432</b> | <b>9426</b> |
|---|------------------------|---|-------------|

## ILS RWY 16C (SA CAT I)

### SEATTLE-TACOMA INTL (SEA)

|  |   |  |            |  |   |                          |       |
|--|---|--|------------|--|---|--------------------------|-------|
| DME or RADAR required. From GRIFY: RNAV 1-GPS required.  |   |  | ALSF-2<br> |  | MISSED APPROACH: Climb on heading 160° and SEA VORTAC R-161 to cross TEBNE/SEA 2.4 DME/RADAR at or below 2000, then climb to 5000 on SEA VORTAC R-161 to MILLT/SEA 11 DME/RADAR and hold, continue climb-in-hold to 5000. |                          |       |
| <p>Simultaneous approach authorized with Rwy 16R. Simultaneous operations require use of vertical guidance, maintain last assigned altitude until established on glideslope. Requires specific OPSPEC, MSPEC or LOA approval and use of HUD to DH.</p> |   |  |            |  |   |                          |       |
| D-ATIS<br><b>118.0</b>   | SEATTLE APP CON<br><b>133.65 273.45</b> | SEATTLE TOWER<br><b>119.9 239.3</b> (Rwys 16L, 16C, 34C, 34R)<br><b>120.95 239.3</b> (Rwys 16R, 34L) |            |  | GND CON<br><b>121.7</b>   | CLNC DEL<br><b>128.0</b> | CPDLC |



NW-1, 20 FEB 2025 to 20 MAR 2025

NW-1, 20 FEB 2025 to 20 MAR 2025

