

LOC/DME I-SNQ 110.3 Chan 40	APP CRS 164°	Rwy Idg 11901 TDZE 432 Apt Elev 432
--	------------------------	--

ILS RWY 16L (CAT II & III)

SEATTLE-TACOMA INTL (SEA)

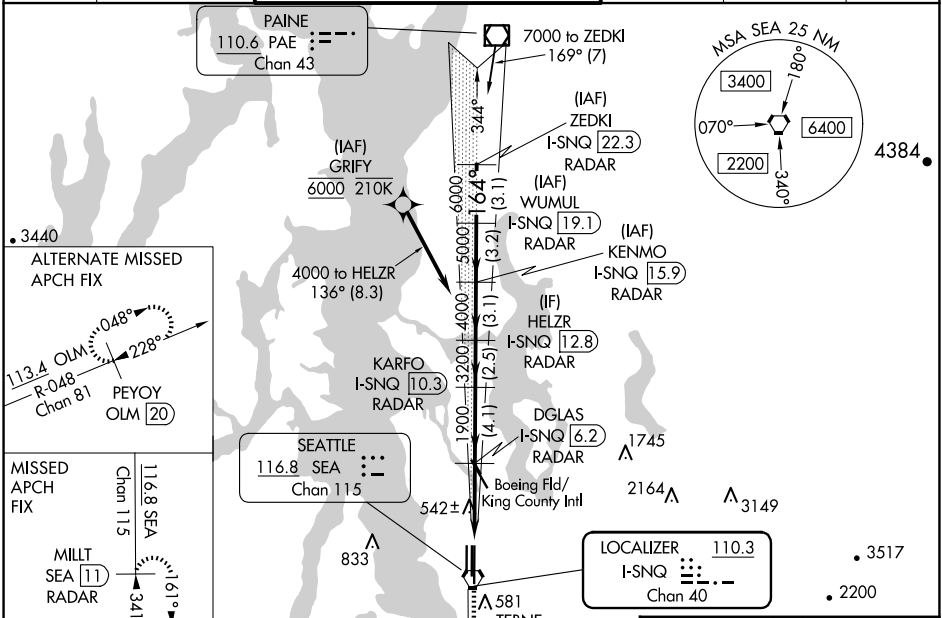
DME or RADAR required. RNP APCH-GPS, from GRIFY.

Simultaneous approach authorized. Cat II: RVR 1000 authorized with specific OPSPEC, MSPEC, or LOA approval and use of Autoland or HUD to touchdown.

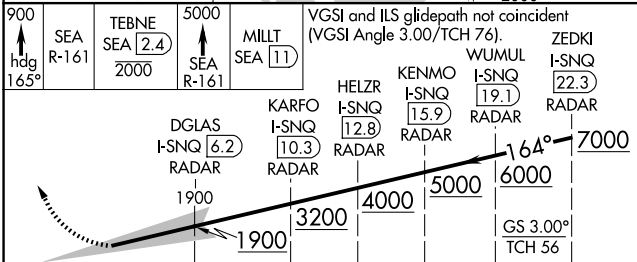
ALSF-2

MISSED APPROACH: Climb to 900 on heading 165° then on SEA VORTAC R-161 to cross TEBNE/SEA 2.4 DME/RADAR at or below 2000 then climb to 5000 on SEA VORTAC R-161 to MILLT/SEA 11 DME/RADAR and hold, continue climb-in-hold to 5000.

D-ATIS 118.0	SEATTLE APP CON 133.65 273.45	SEATTLE TOWER 119.9 239.3 (Rwys 16L, 16C, 34C, 34R) 120.95 239.3 (Rwys 16R, 34L)	GND CON 121.7	CLNC DEL 128.0	CPDLC
------------------------	---	--	-------------------------	--------------------------	-------



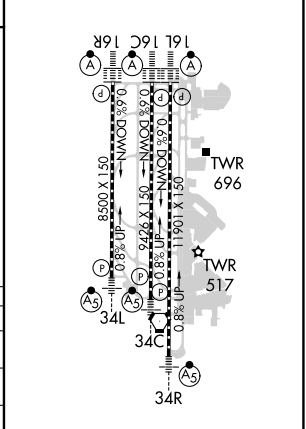
900 hgd 165°	SEA R-161	TEBNE SEA 2.4 2000	MILLT SEA 11	VGSI and ILS glidepath not coincident (VGSI Angle 3.00/TCH 76).	ZEDKI I-SNQ 22.3 RADAR
--------------------	-----------	-----------------------	--------------	---	---------------------------



CATEGORY	A	B	C	D
S-ILS 16L	NA	CAT II RA 176/12 100	DA 532	
S-ILS 16L	NA	CAT III RVR 03		

CATEGORY II & III ILS - SPECIAL AIRCREW & AIRCRAFT CERTIFICATION REQUIRED

ELEV 432	TDZE 432
----------	----------



HIRL all Rwys
TDZ/CL Rwys 16L, 16C, 16R and 34R

NW-1, 20 FEB 2025 to 20 MAR 2025

NW-1, 20 FEB 2025 to 20 MAR 2025