

LOC/DME I-CJL <b>110.75</b> Chan 44 (Y)	APP CRS <b>164°</b>	Rwy Idg TDZE Apt Elev	<b>8500</b> <b>415</b> <b>432</b>
---	------------------------	-----------------------------	---

# ILS or LOC RWY 16R

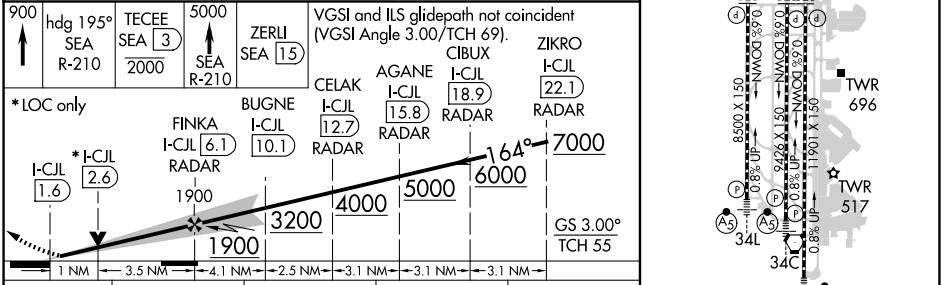
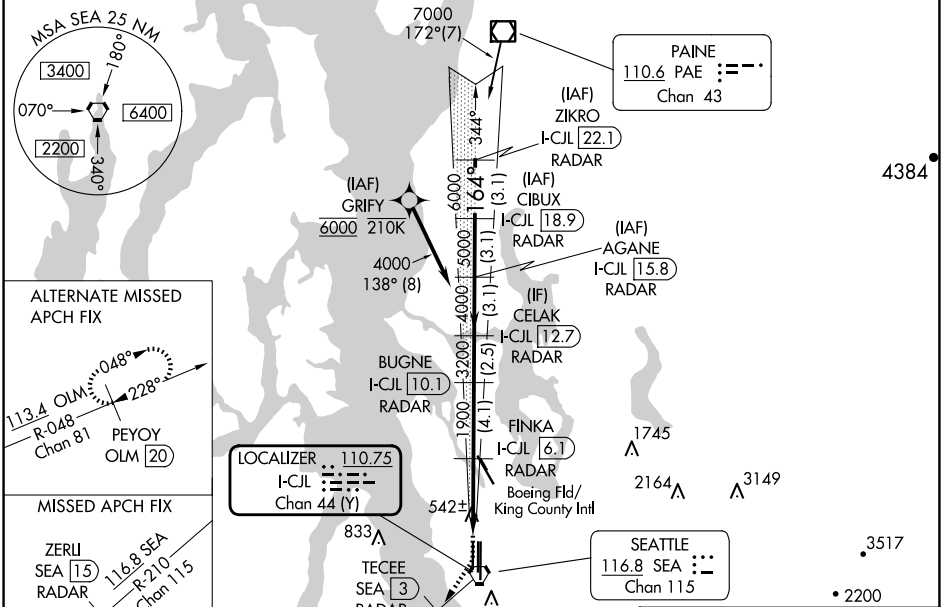
SEATTLE-TACOMA INTL (SEA)

DME or RADAR required. From GRIFY: RNAV 1-GPS required.

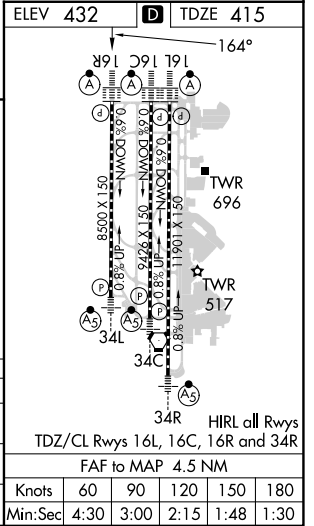
ALSF-2

MISSED APPROACH: Climb to 900 then climb on heading 195° and on SEA VORTAC R-210 to cross TECEE/SEA 3 DME/RADAR at or below 2000 then climb to 5000 on SEA VORTAC R-210 to ZERLI/SEA 15 DME/RADAR and hold, continue climb-in-hold to 5000.

D-ATIS <b>118.0</b>	SEATTLE APP CON <b>133.65 273.45</b>	SEATTLE TOWER <b>119.9 239.3</b> (Rwys 16L, 16C, 34C, 34R) <b>120.95 239.3</b> (Rwys 16R, 34L)	GND CON <b>121.7</b>	CLNC DEL <b>128.0</b>	CPDLC
------------------------	---	--	-------------------------	--------------------------	-------



ELEV 432	TDZE 415								
<table border="1"> <tr> <td>900</td> <td>TECEE SEA 3</td> <td>5000</td> <td>ZERLI SEA 15</td> </tr> <tr> <td>hdg 195° SEA R-210</td> <td>2000</td> <td>SEA R-210</td> <td>15</td> </tr> </table>		900	TECEE SEA 3	5000	ZERLI SEA 15	hdg 195° SEA R-210	2000	SEA R-210	15
900	TECEE SEA 3	5000	ZERLI SEA 15						
hdg 195° SEA R-210	2000	SEA R-210	15						
<p>*LOC only</p> <p>I-CJL 1.6, *I-CJL 2.6, I-CJL 6.1, I-CJL 10.1, I-CJL 12.7, I-CJL 15.8, I-CJL 18.9, I-CJL 22.1</p>									
<p>VGSI and ILS glidepath not coincident (VGSI Angle 3.00/TCH 69).</p>									
<table border="1"> <tr> <td>1 NM</td> <td>3.5 NM</td> <td>4.1 NM</td> <td>2.5 NM</td> <td>3.1 NM</td> <td>3.1 NM</td> <td>3.1 NM</td> </tr> </table>		1 NM	3.5 NM	4.1 NM	2.5 NM	3.1 NM	3.1 NM	3.1 NM	
1 NM	3.5 NM	4.1 NM	2.5 NM	3.1 NM	3.1 NM	3.1 NM			
CATEGORY	A	B	C	D					
S-ILS 16R	615/18 200 (200-½)								
S-LOC 16R	800/24	385 (400-½)	800/35	385 (400-¾)					
CIRCLING	1000-1	568 (600-1)	1000-1½	568 (600-2)					



NW-1, 20 FEB 2025 to 20 MAR 2025

NW-1, 20 FEB 2025 to 20 MAR 2025