

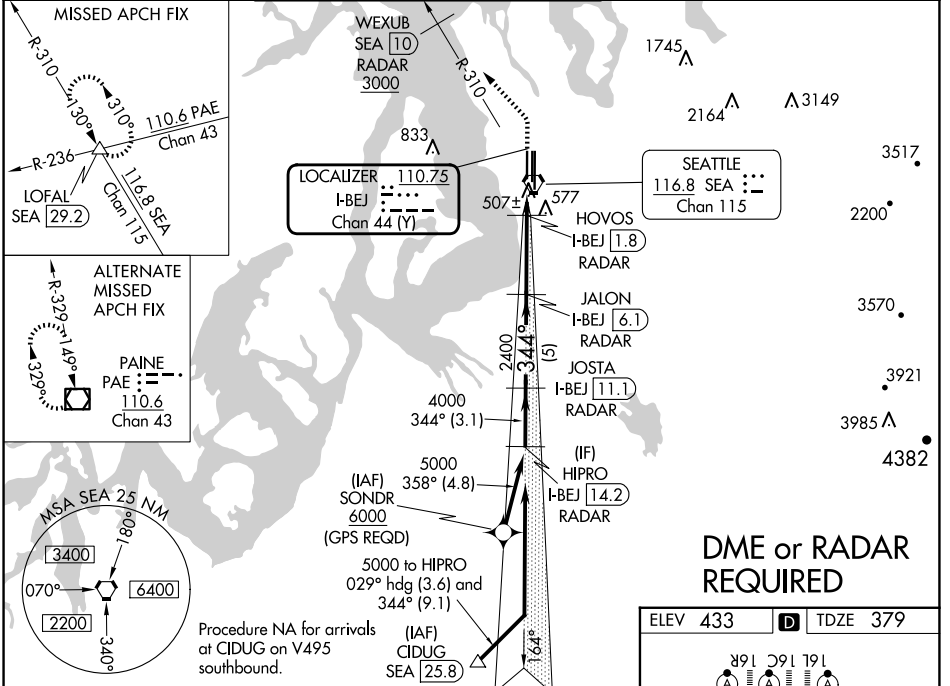
LOC/DME I-BEJ <b>110.75</b> Chan 44 (Y)	APP CRS <b>344°</b>	Rwy ldg TDZE <b>8500</b> <b>379</b> Apt Elev <b>433</b>
---	------------------------	---

# ILS or LOC RWY 34L

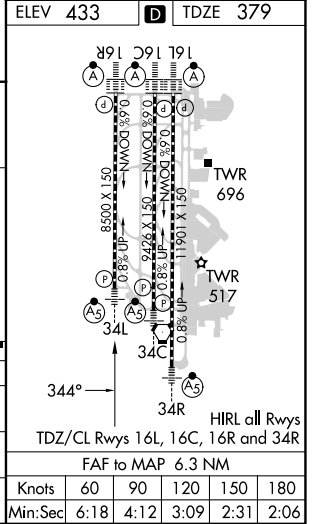
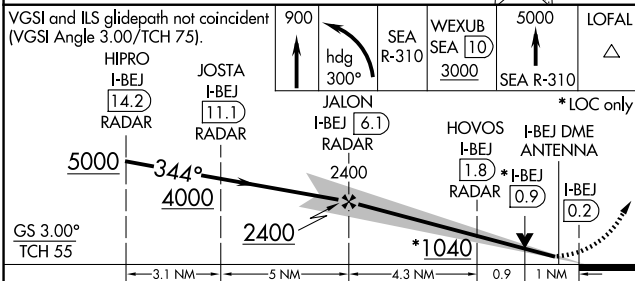
SEATTLE-TACOMA INTL (SEA)

<p><b>▽</b> DME or RADAR required. Simultaneous approach authorized with Rwy 34R/C. # RVR 1800 authorized with use of FD or AP or HUD to DA.</p>	<p>MALS/R </p>	<p>MISSED APPROACH: Climb to 900 then climbing left turn on heading 300° and on SEA VORTAC R-310 to cross WEXUB/10 DME/RADAR at or above 3000, then climb to 5000 on SEA VORTAC R-310 to LOFAL/SEA 29.2 DME and hold.</p>
--	--------------------	---

D-ATIS <b>118.0</b>	SEATTLE APP CON <b>133.65 273.45</b>	SEATTLE TOWER <b>119.9 239.3</b> (Rwys 16L, 16C, 34C, 34R) <b>120.95 239.3</b> (Rwys 16R, 34L)	GND CON <b>121.7</b>	CLNC DEL <b>128.0</b>	CPDLC
------------------------	---	--	-------------------------	--------------------------	-------



## DME or RADAR REQUIRED



CATEGORY	A	B	C	D
S-ILS 34L#	579/24 200 (200-½)			
S-LOC 34L	760/24 381 (400-½)	760/40 381 (400-¾)		
CIRCLING	1000-1 567 (600-1)	1000-1½ 567 (600-1½)		1000-2 567 (600-2)

NW-1, 20 FEB 2025 to 20 MAR 2025

NW-1, 20 FEB 2025 to 20 MAR 2025