

LOC/DME I-SEA <b>110.3</b> Chan <b>40</b>	APP CRS <b>344°</b>	Rwy Idg TDZE Apt Elev	34R <b>11901</b> <b>372</b> <b>432</b>	34C <b>9426</b> <b>387</b> <b>432</b>
---	------------------------	-----------------------------	---	--

# ILS or LOC RWY 34R

SEATTLE-TACOMA INTL (SEA)

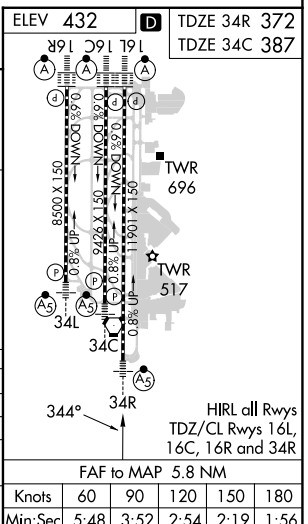
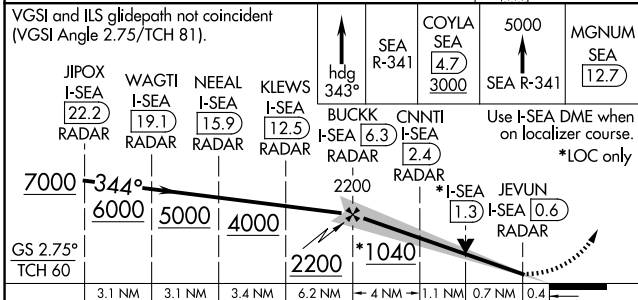
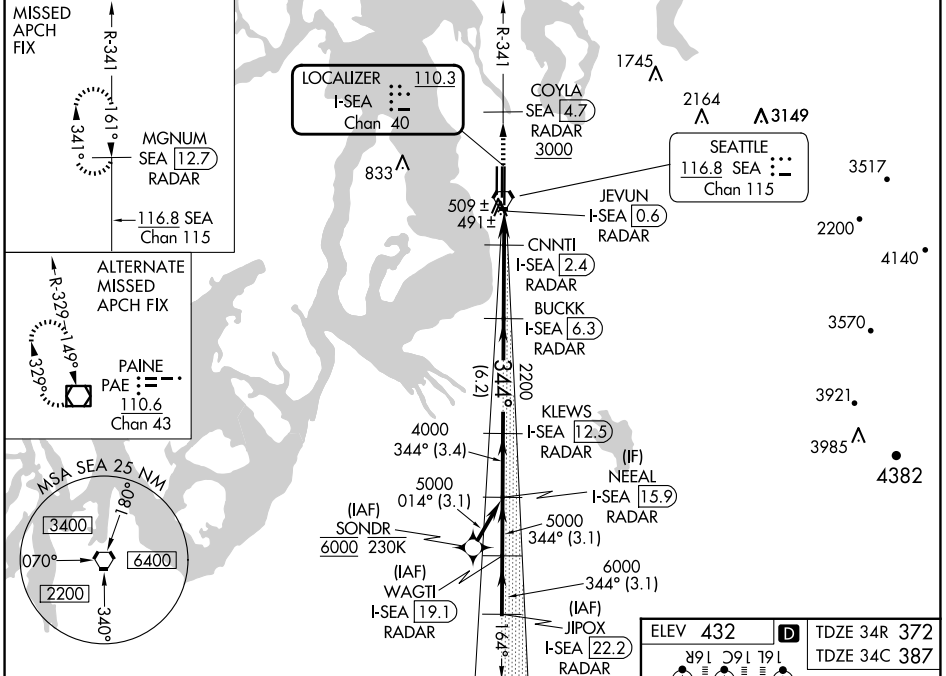
From SONDR: RNAV 1-GPS required. DME or RADAR required.

MALS Rwy 34R/C

MISSED APPROACH: Climb on heading 343° and outbound on SEA VORTAC R-341 to cross COYLA/SEA 4.7 DME/RADAR at or above 3000 then climb to 5000 on SEA VORTAC R-341 to MGNUM/SEA 12.7 DME/RADAR and hold, continue climb-in-hold to 5000.

Inop table does not apply to Sidestep 34C Cats A/B. Simultaneous approach authorized with Rwy 34L.

D-ATIS <b>118.0</b>	SEATTLE APP CON <b>133.65 273.45</b>	SEATTLE TOWER <b>119.9 239.3</b> (Rwys 16L, 16C, 34C, 34R) <b>120.95 239.3</b> (Rwys 16R, 34L)	GND CON <b>121.7</b>	CLNC DEL <b>128.0</b>	CPDLC
------------------------	---	--	-------------------------	--------------------------	-------



VGSI and ILS glidepath not coincident (VGSI Angle 2.75/TCH 81).	Use I-SEA DME when on localizer course. *LOC only			
JIPOX I-SEA 22.2 RADAR	WAGTI I-SEA 19.1 RADAR	NEEL I-SEA 15.9 RADAR	KLEWS I-SEA 12.5 RADAR	BUCKK I-SEA 6.3 RADAR
CNNTI I-SEA 2.4 RADAR	JEVUN I-SEA 0.6 RADAR	COYLA SEA 4.7 RADAR	SEA R-341	5000 SEA R-341
MGNUM SEA 12.7				
GS 2.75° TCH 60	3.1 NM	3.1 NM	3.4 NM	6.2 NM
4000	5000	6000	7000	
1040	2200			
0.4	0.7 NM	1.1 NM	4 NM	6.2 NM
A	B	C	D	
Category	S-ILS 34R 572/18 200 (200-½)			
S-LOC 34R	740/24	368 (400-½)	740/35	368 (400-¾)
SIDESTEP 34C	760/55 373 (400-1)		760-1½ 373 (400-1½)	
CRCLING	1000-1 568 (600-1)		1000-1½ 568 (600-1½)	
			1000-2 568 (600-2)	

NW-1, 20 FEB 2025 to 20 MAR 2025

NW-1, 20 FEB 2025 to 20 MAR 2025