

SKYKO ONE ARRIVAL

NW-1, 20 FEB 2025 to 20 MAR 2025

SEATTLE APP CON
123.9 338.2
BFI ATIS
127.75
RIN ATIS
126.95
SEA D-ATIS
118.0

ARRIVAL ROUTE DESCRIPTION

EPHRATA TRANSITION (EPH.SKYKO1): From over EPH VORTAC on EPH R-266 and PAE R-085 to SKYKO. Thence

ODESS TRANSITION (ODESS.SKYKO1): From over ODESS on EPH R-082 to EPH VORTAC, then on EPH R-266 and PAE R-085 to SKYKO. Thence

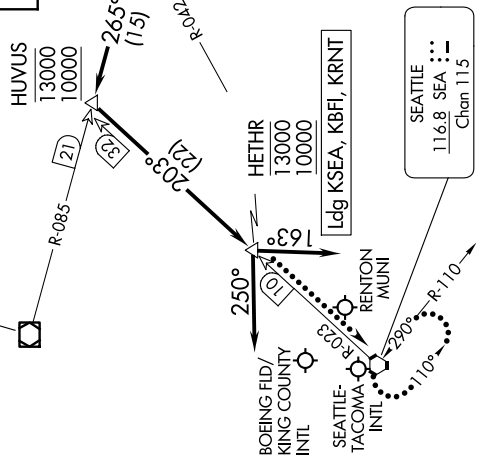
. from SKYKO on PAINE VOR/DME (PAE) R-085 to cross HUVUS between 10000 and 13000, then on SEATTLE VORTAC (SEA) SEA R-023 to cross HETHR between 10000 and 13000, thence

LANDING NORTH: Fly heading 163°. Expect RADAR vectors to final approach course.
LANDING SOUTH: Fly heading 250°. Expect RADAR vectors to final approach course.

LOST COMMUNICATIONS: Maintain last assigned altitude. From over HETHR, proceed direct SEA VORTAC and hold.



PAINE
110.6 PAE :---
Chan 43



SPOKANE
115.5 GEG :---
Chan 102

MOSES LAKE
115.0 MWH :---
Chan 97

EPHRATA
112.6 EPH :---
Chan 73

SEATTLE
116.8 SEA :---
Chan 115

NOTE: DME required.
NOTE: RADAR required.
NOTE: Turboprop and prop aircraft only.

NOTE: Chart not to scale.

SKYKO ONE ARRIVAL

NW-1, 20 FEB 2025 to 20 MAR 2025