

# SUMMA TWO DEPARTURE

AL-582 (FAA)

SEATTLE-TACOMA INTL (SEA)  
SEATTLE, WASHINGTON

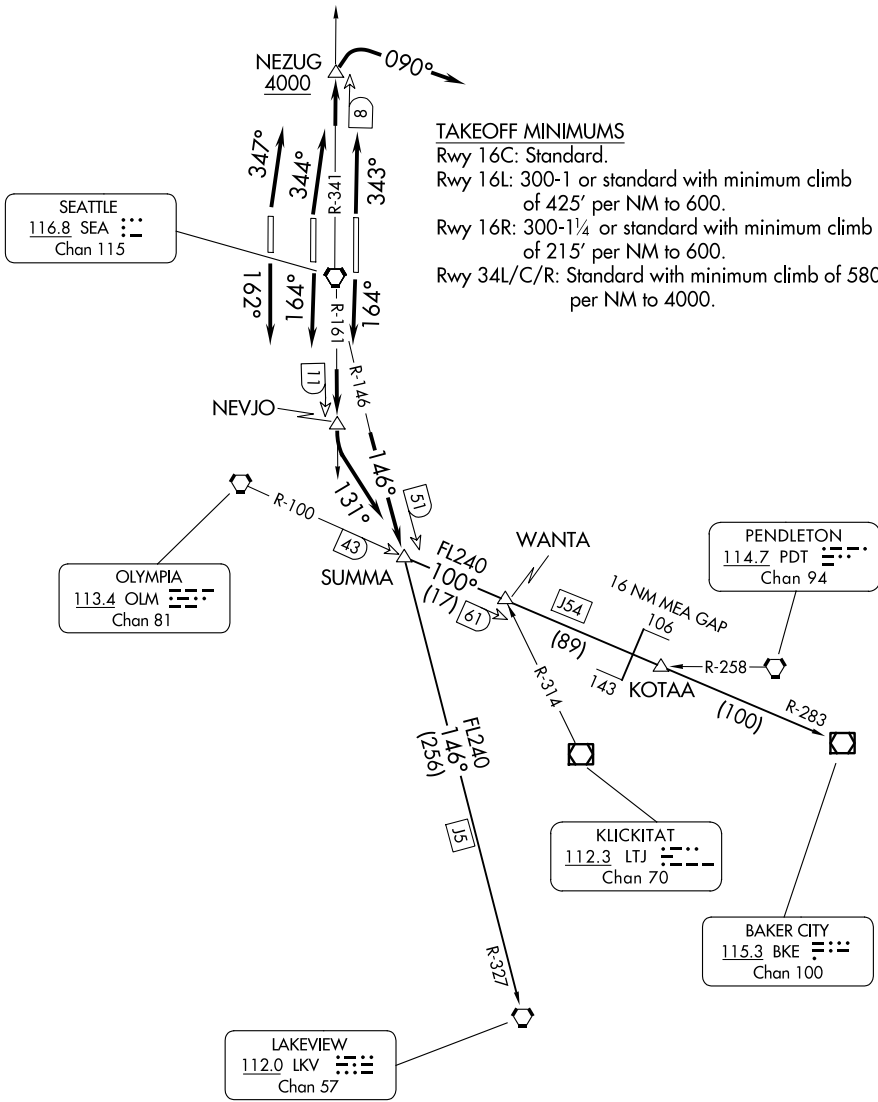
D-ATIS  
118.0  
CPDLC  
SEATTLE DEP CON  
119.2 284.7 (Rwys 34R/C/L) (N)  
120.4 269.125 (Rwys 16L/C/R) (S)

**TOP ALTITUDE:  
ASSIGNED BY ATC**

NOTE: RADAR and DME required.

### TAKEOFF MINIMUMS

Rwy 16C: Standard.  
Rwy 16L: 300-1 or standard with minimum climb of 425' per NM to 600.  
Rwy 16R: 300-1¼ or standard with minimum climb of 215' per NM to 600.  
Rwy 34L/C/R: Standard with minimum climb of 580' per NM to 4000.



NW-1, 20 FEB 2025 to 20 MAR 2025

NW-1, 20 FEB 2025 to 20 MAR 2025

NOTE: Chart not to scale.

(CONTINUED ON FOLLOWING PAGE)

# SUMMA TWO DEPARTURE

SEATTLE, WASHINGTON  
SEATTLE-TACOMA INTL (SEA)



DEPARTURE ROUTE DESCRIPTION

TAKEOFF RUNWAYS 16L/C: Climb on heading 164° and SEA VORTAC R-161 to NEVJO, thence. . . .

TAKEOFF RUNWAY 16R: Climb on heading 162° and SEA VORTAC R-161 to NEVJO, thence. . . .

. . . . left turn heading 131° to intercept the SEA R-146 to SUMMA INT, then on assigned transition, maintain ATC assigned altitude.

TAKEOFF RUNWAY 34L: Climb on heading 347° and SEA VORTAC R-341, to cross NEZUG at or above 4000, thence. . . .

TAKEOFF RUNWAY 34C: Climb on heading 344° and SEA VORTAC R-341, to cross NEZUG at or above 4000, thence. . . .

TAKEOFF RUNWAY 34R: Climb on heading 343° and SEA VORTAC R-341, to cross NEZUG at or above 4000, thence. . . .

. . . .right turn heading 090° for RADAR vectors to SUMMA INT, then on assigned transition, maintain ATC assigned altitude.

BAKER CITY TRANSITION (SUMMA2.BKE): From over SUMMA on OLM R-100 and and BKE R-283 to BKE VOR/DME.

LAKEVIEW TRANSITION (SUMMA2.LKV): From over SUMMA on SEA R-146 and and LKV R-327 to LKV VORTAC.

NW-1, 20 FEB 2025 to 20 MAR 2025

NW-1, 20 FEB 2025 to 20 MAR 2025