

LOC I-ILN 110.7	APP CRS 224°	Rwy Idg 10701 TDZE 1077 Apt Elev 1077
---------------------------	------------------------	--

ILS RWY 22R (CAT II & III)

WILMINGTON AIR PARK (ILN)

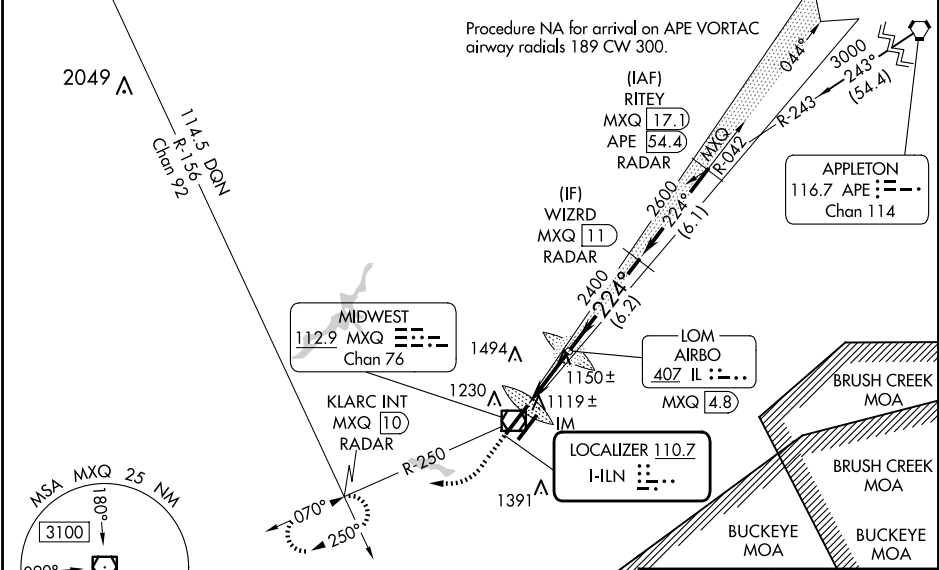
DME or RADAR required for procedure entry.

Simultaneous approach authorized.
 DME from MXQ VOR/DME.
 DME use requires simultaneous reception of I-ILN and MXQ DME.

ALSF-2

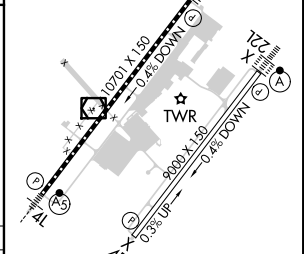
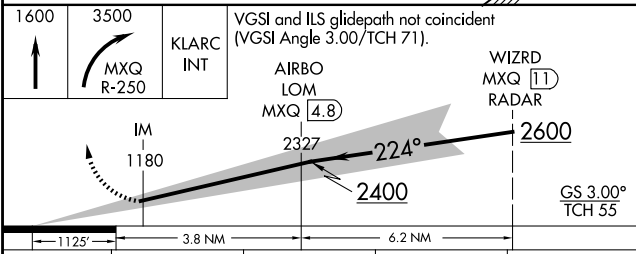
MISSED APPROACH: Climb to 1600 then climbing right turn to 3500 on MXQ VOR/DME R-250 to KLARC INT/MXQ 10 DME/RADAR and hold, continue climb-in-hold to 3500.

D-ATIS 124.925	COLUMBUS APP CON 118.85 269.275	WILMINGTON TOWER 119.475	GND CON 121.6	CLNC DEL 128.85
--------------------------	---	------------------------------------	-------------------------	---------------------------



EC-2, 20 FEB 2025 to 20 MAR 2025

EC-2, 20 FEB 2025 to 20 MAR 2025



CATEGORY	A	B	C	D
S-ILS 22R	CAT II RA 106/12 100 DA 1177			
S-ILS 22R	CAT III RVR 06			

CATEGORY II & III ILS - SPECIAL AIRCREW & AIRCRAFT CERTIFICATION REQUIRED

TDZ/CL Rwy 22L and 22R
HRL Rwy 4L-22R and 4R-22L