

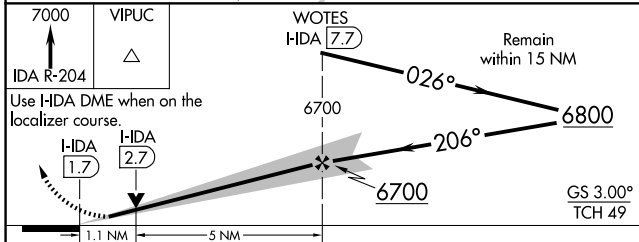
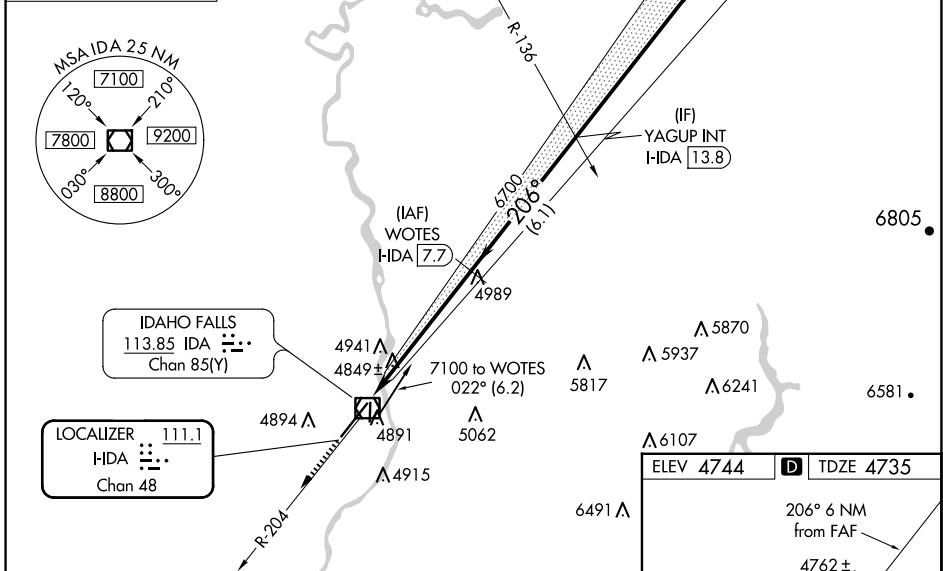
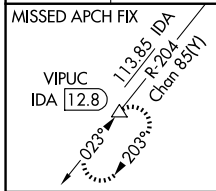
LOC/DME I-HDA	APP CRS	Rwy Idg	<b>9002</b>
<b>111.1</b>	<b>206°</b>	TDZE	<b>4735</b>
Chan <b>48</b>		Apt Elev	<b>4744</b>

# ILS or LOC RWY 21

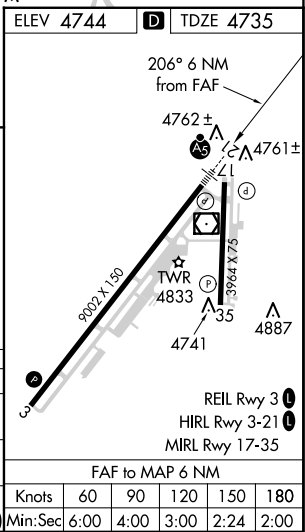
IDAHO FALLS RGNL (IDA)

DME required.	MALSR	MISSED APPROACH: Climb to 7000 on IDA VOR/DME R-204 to VIPUC/12.8 DME and hold.
<p><b>▼</b> Circling to Rwy 35 NA at night. For inop ALS, increase S-ILS 21 Cat E visibility to RVR 4000, and S-LOC 21 Cat E visibility to RVR 6000.</p> <p><b>▲</b></p>		

ATIS	SALT LAKE CENTER	IDAHO FALLS TOWER *	GND CON	CLNC DEL	GCO	UNICOM
<b>135.325</b>	<b>128.35 239.25</b>	<b>118.5 (CTAF) 0 257.8</b>	<b>121.7</b>	<b>121.7</b>	<b>121.725</b>	<b>122.95</b>



CATEGORY	A	B	C	D	E
S-ILS 21	4985/24		250 (300-½)		
S-LOC 21	5120/24	385 (400-½)	5120/35 385 (400-¾)		
<b>C</b> CIRCLING	5200-1 456 (500-1)	5300-1 556 (600-1)	5400-1¾ 656 (700-1¾)	5420-2¼ 676 (700-2¼)	5420-2½ 676 (700-2½)



NW-1, 20 FEB 2025 to 20 MAR 2025

NW-1, 20 FEB 2025 to 20 MAR 2025