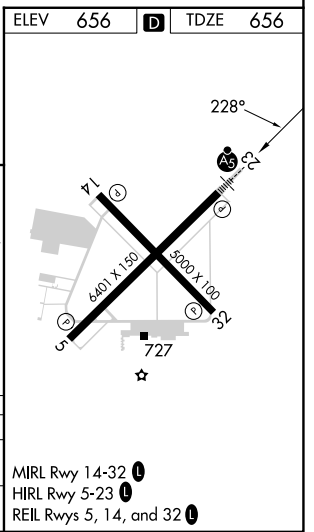
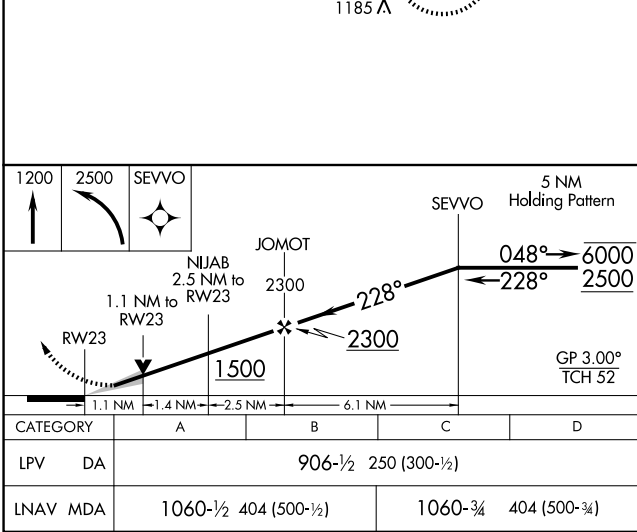
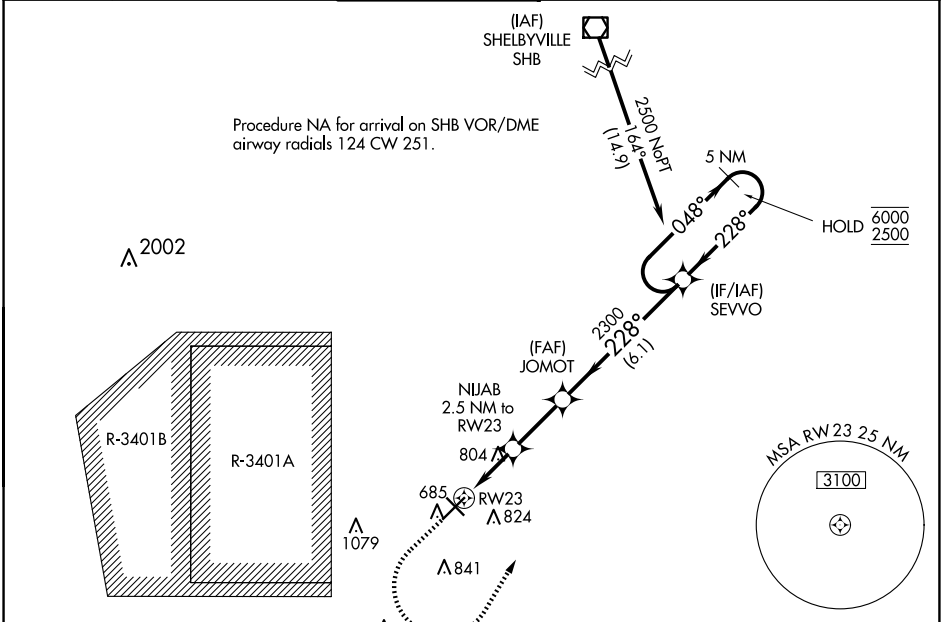


WAAS CH 90399 W23A	APP CRS 228°	Rwy Idg TDZE 656 Apt Elev 656	6401
--	------------------------	---	-------------

RNAV (GPS) RWY 23

COLUMBUS MUNI (BAK)

RNP APCH - GPS.		MALSR		MISSED APPROACH: Climb to 1200, then climbing left turn to 2500 direct SEVVO and hold.	
<p>▲ For inop ALS, increase LNAV Cat C/D visibility to 1½ SM.</p>					
AWOS-3 119.75	INDIANAPOLIS APP CON 134.85 317.8	COLUMBUS TOWER ★ 118.6 (CTAF) 0	GND CON 121.6	CLNC DEL 134.85 (When twr closed)	UNICOM 122.95



EC-2, 20 FEB 2025 to 20 MAR 2025

EC-2, 20 FEB 2025 to 20 MAR 2025