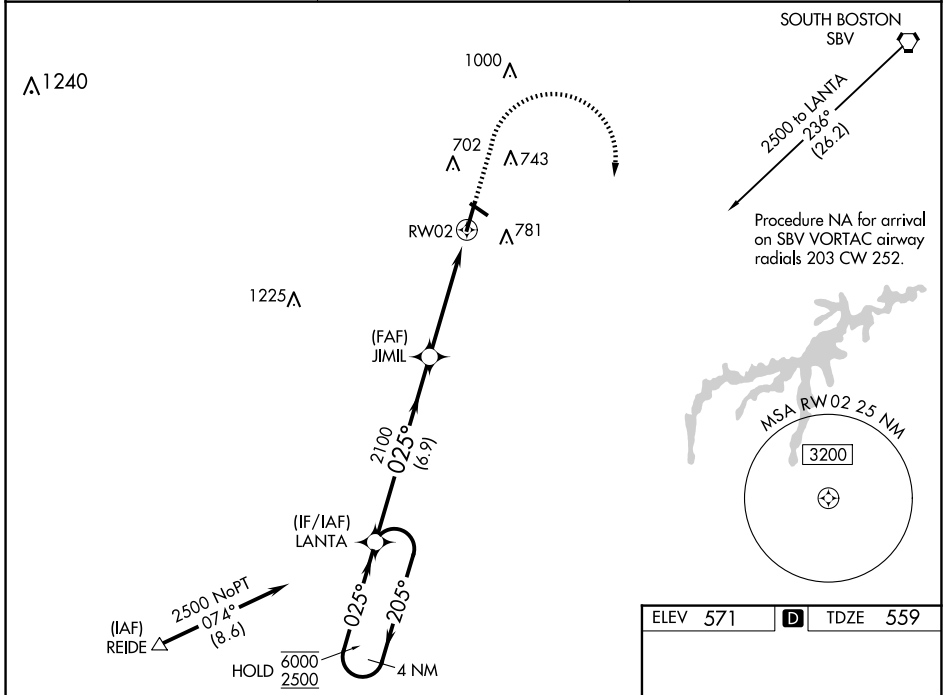


WAAS CH <b>42916</b> <b>W02A</b>	APP CRS <b>025°</b>	Rwy ldg TDZE Apt Elev	<b>5600</b> <b>559</b> <b>571</b>
--	------------------------	-----------------------------	---

# RNAV (GPS) RWY 2

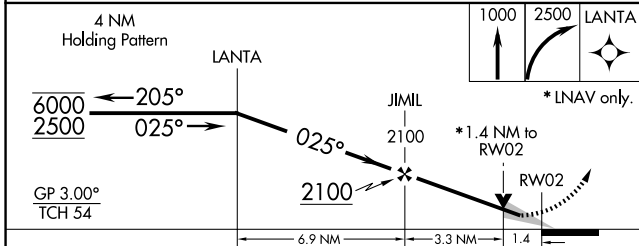
DANVILLE RGNL (DAN)

RNP APCH.		MALSRL	MISSED APPROACH: Climb to 1000 then climbing right turn to 2500 direct LANTA and hold.
<p><b>▽</b> For uncompensated Baro-VNAV systems, LNAV/VNAV NA below -14°C or above 54°C. For inop ALS increase LNAV/VNAV all Cats visibility to 1 SM. Increase LNAV Cats C/D visibility to 1½ SM.</p>			
ASOS <b>128.125</b>	WASHINGTON CENTER <b>124.05 352.0</b>	UNICOM <b>123.05 (CTAF) 0</b>	

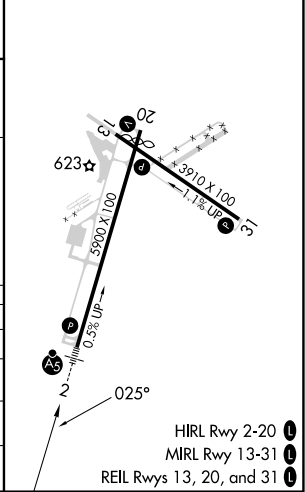


NE-3, 20 FEB 2025 to 20 MAR 2025

NE-3, 20 FEB 2025 to 20 MAR 2025



ELEV 571	<b>D</b>	TDZE 559
----------	----------	----------



CATEGORY	A	B	C	D
LPV DA		759-½	200 (200-½)	
LNAV/VNAV DA		924-⅝	365 (400-⅝)	
LNAV MDA	1040-½ 481 (500-½)		1040-1 481 (500-1)	
<b>C</b> CIRCLING	1120-1 549 (600-1)		1120-1½ 549 (600-1½)	1200-2 629 (700-2)