

WAAS CH <b>93631</b> <b>W31A</b>	APP CRS <b>314°</b>	Rwy Idg <b>3910</b>
	TDZE <b>561</b>	
	Apt Elev <b>571</b>	

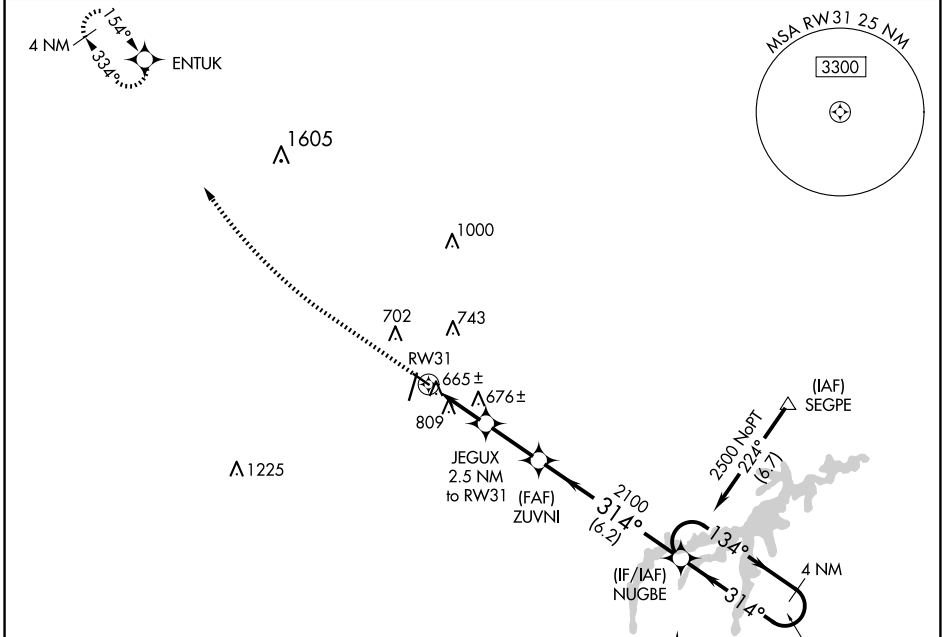
# RNAV (GPS) RWY 31

DANVILLE RGNL (DAN)

RNP APCH.  
 Rwy 31 helicopter visibility reduction below 3/4 SM NA.

MISSED APPROACH: Climb to 1000 then climbing right turn to 3300 direct ENTUK and hold.

ASOS <b>128.125</b>	WASHINGTON CENTER <b>124.05 352.0</b>	UNICOM <b>123.05 (CTAF)</b>
------------------------	--	--------------------------------



ELEV 571 TDZE 561

HIRL Rwy 2-20

MIRL Rwy 13-31

REIL Rws 13, 20 and 31

1000	3300	ENTUK	Visual Segment - Obstacles.	4 NM Holding Pattern
		ZUVNI	NUGBE	
	JEGUX 2.5 NM to RWY31			
	RWY31	2100	134°	6000 / 2500
	2.5 NM	2.3 NM	6.2 NM	
CATEGORY	A	B	C	D
LP MDA	920-1	359 (400-1)		NA
LNAV MDA	1060-1	499 (500-1)		NA

NE-3, 20 FEB 2025 to 20 MAR 2025

NE-3, 20 FEB 2025 to 20 MAR 2025