


WAAS CH <b>69604</b> <b>W22A</b>	APP CRS <b>225°</b>	Rwy Idg TDZE Apt Elev	<b>5504</b> <b>242</b> <b>264</b>
----------------------------------------	------------------------	-----------------------------	-----------------------------------------

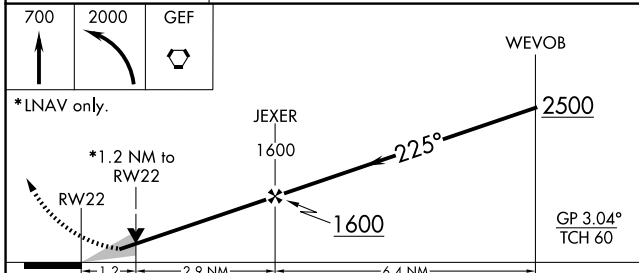
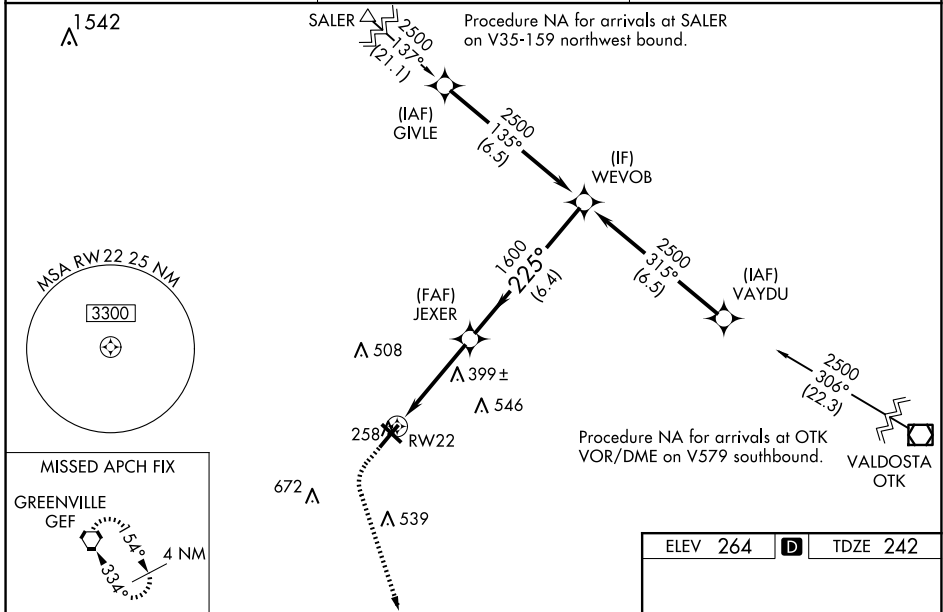
# RNAV (GPS) RWY 22

THOMASVILLE RGNL (TVI)

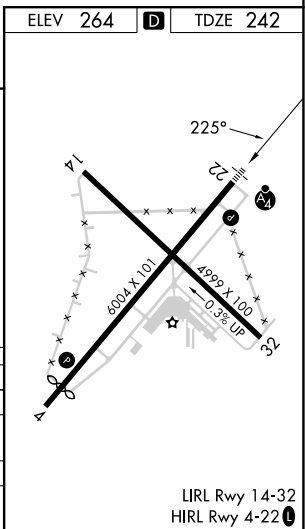
⚠ For uncompensated Baro-VNAV systems, LNAV/VNAV NA below -15°C (5°F) or above 53°C (127°F). DME/DME RNP-0.3 NA. When local altimeter setting not received, use Valdosta altimeter setting and increase LPV DA to 595, LNAV/VNAV DA to 613 and all MDA 100 feet. Increase LPV all Cats visibility to ¾ SM, LNAV/VNAV all Cats visibility to 1 SM, and increase LNAV Cat C/D visibility to 1½ SM. Increase Circling Cat C visibility to 2 SM and Circling Cat D visibility to 2¾ SM. For inop ALS, increase LPV and LNAV/VNAV all Cats visibility to ¾ SM, and LNAV Cat C/D visibility to 1½ SM. VDP and Baro-VNAV NA when using Valdosta altimeter setting. Circling Rwy 4, 14, 32 NA at night. For inop ALS when using Valdosta altimeter setting, increase LPV all Cats visibility to 1½ SM, LNAV/VNAV Cat D to 1½ SM and LNAV Cat C/D to 1¾ SM.

**MALSF**  
  
**MISSED APPROACH:**  
 Climb to 700 then climbing left turn to 2000 direct GEF VORTAC and hold.

AWOS-3PT <b>119.175</b>	VALDOSTA APP CON* <b>126.6 285.6</b>	UNICOM <b>123.075 (CTAF) 0</b>
----------------------------	-----------------------------------------	-----------------------------------



CATEGORY	A	B	C	D
LPV DA		512-¾	270 (300-¾)	
LNAV/VNAV DA		530-¾	288 (300-¾)	
LNAV MDA	660-¾	418 (400-¾)	660-1	418 (400-1)
<b>CIRCLING</b>	700-1 436 (500-1)	800-1 536 (600-1)	900-1¾ 636 (700-1¾)	1040-2½ 776 (800-2½)



SE-4, 20 FEB 2025 to 20 MAR 2025

SE-4, 20 FEB 2025 to 20 MAR 2025