

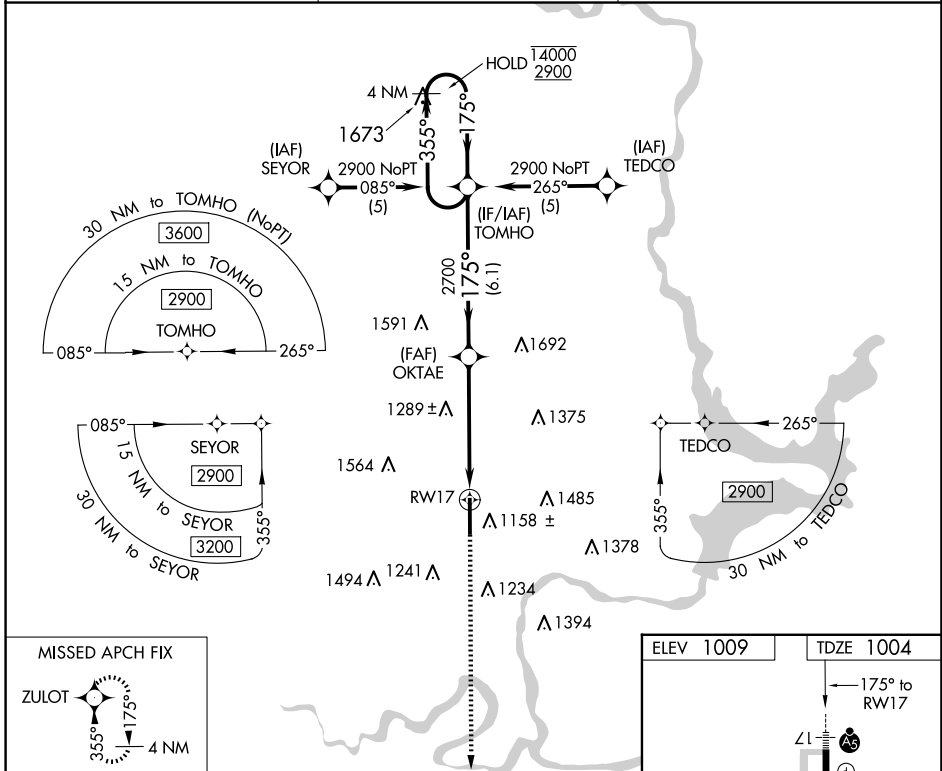
WAAS CH 50408 W17A	APP CRS 175°	Rwy Idg TDZE Apt Elev	7201 1004 1009
--	------------------------	-----------------------------	---

RNAV (GPS) RWY 17

PONCA CITY RGNL (PNC)

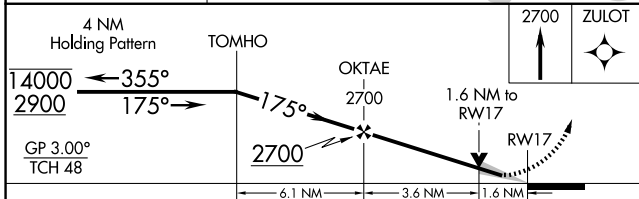
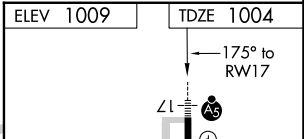
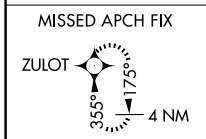
RNP APCH - GPS.	MALSR	MISSED APPROACH: Climb to 2700 direct ZULOT and hold.
<p>▼ For uncompensated Baro-VNAV systems, LNAV/VNAV NA below -16°C or above 54°C. For inop ALS increase LPV visibility all Cats to 7/8 SM.</p> <p>▲</p>		

ASOS 134.075	KANSAS CITY CENTER 127.8 319.1	UNICOM 123.0 (CTAF) 0
------------------------	--	---------------------------------



SC-1, 20 FEB 2025 to 20 MAR 2025

SC-1, 20 FEB 2025 to 20 MAR 2025



CATEGORY	A	B	C	D
LPV DA		1279-1/2	275 (300-1/2)	
LNAV/VNAV DA		1330-1/2	326 (400-1/2)	
LNAV MDA	1540-1/2	536 (600-1/2)	1540-1	536 (600-1)
C CIRCLING	1540-1 531 (600-1)	1580-1 571 (600-1)	1800-2 1/4 791 (800-2 1/4)	1880-2 3/4 871 (900-2 3/4)

