

WAAS CH <b>57907</b> <b>W21A</b>	APP CRS <b>214°</b>	Rwy Idg TDZE Apt Elev	<b>6500</b> <b>522</b> <b>547</b>
--	------------------------	-----------------------------	---

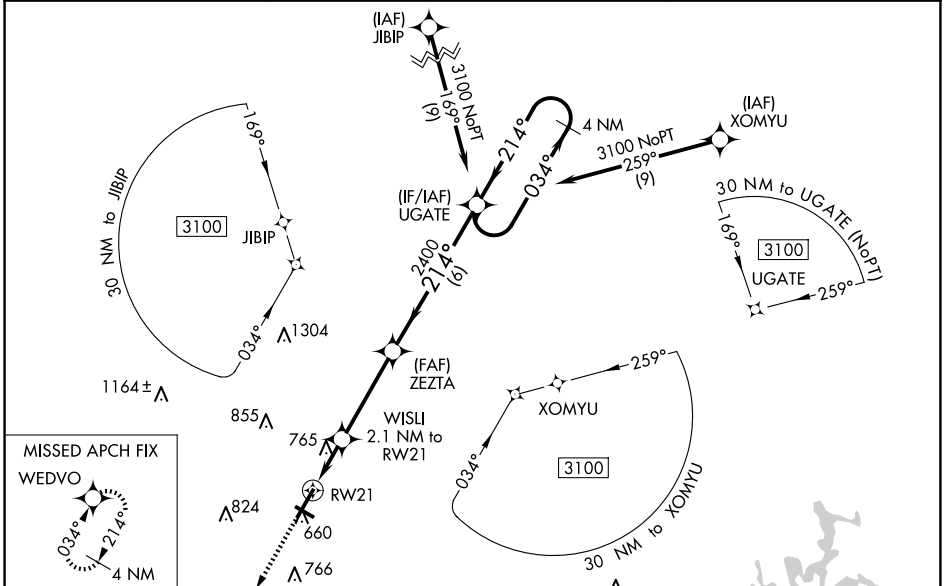
# RNAV (GPS) RWY 21

BOWLING GREEN-WARREN COUNTY RGNL (BWG)

▼ Baro-VNAV NA when using Glasgow Muni altimeter setting. For uncompensated Baro-VNAV systems, LNAV/VNAV NA below -16°C (4°F) or above 54°C (130°F). DME/DME RNP-0.3 NA.  
 ▲ When local altimeter setting not received use Glasgow Muni altimeter setting and increase all DA 77 feet all MDA 80 feet; increase LPV all Cats visibility 1/8 mile and LNAV/VNAV all Cats 3/8 mile and LNAV and Circling Cats C and D visibility 1/4 mile. Helicopter visibility reduction below 3/4 SM NA. Night landing: Rwy 30 NA.

MISSED APPROACH:  
Climb to 3100 direct WEDVO and hold.

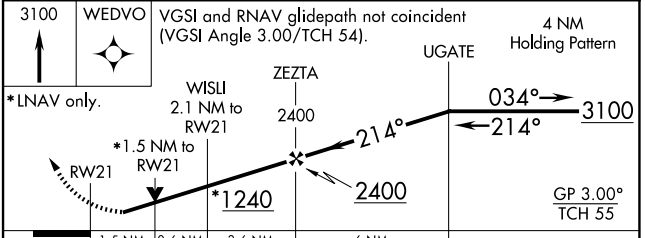
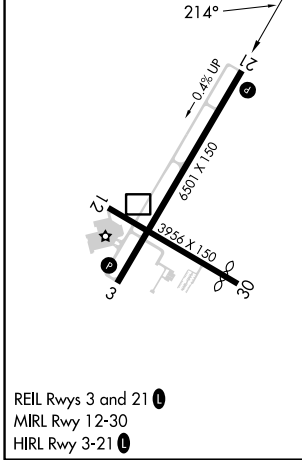
ASOS <b>127.825</b>	MEMPHIS CENTER <b>133.85 285.5</b>	UNICOM <b>123.0 (CTAF) 0</b>
------------------------	---------------------------------------	---------------------------------



SE-1, 20 FEB 2025 to 20 MAR 2025

SE-1, 20 FEB 2025 to 20 MAR 2025

ELEV <b>547</b>	<b>D</b>	TDZE <b>522</b>
-----------------	----------	-----------------



CATEGORY	A	B	C	D
LPV DA	807-1 285 (300-1)			
LNAV/VNAV DA	1073-1 7/8 551 (600-1 7/8)			
LNAV MDA	1020-1	498 (500-1)	1020-1 3/8	498 (500-1 3/8)
<b>C</b> CIRCLING	1020-1 473 (500-1)	1120-1 573 (600-1)	1160-1 3/4 613 (700-1 3/4)	1200-2 653 (700-2)