

WAAS CH 69510 W03A	APP CRS 034°	Rwy Idg TDZE Apt Elev	6500 547 547
----------------------------------------	------------------------	-----------------------------	-----------------------------------------

RNAV (GPS) RWY 3

BOWLING GREEN-WARREN COUNTY RGNL (BWG)

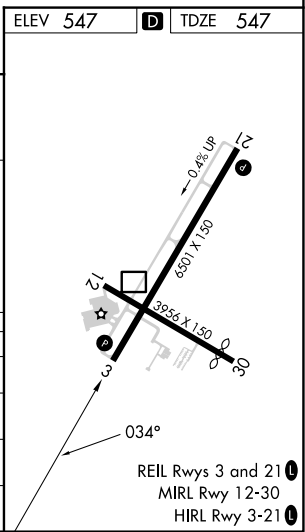
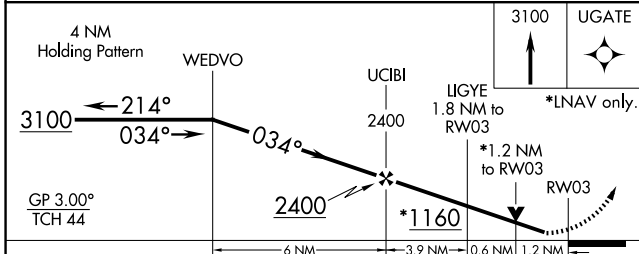
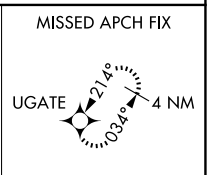
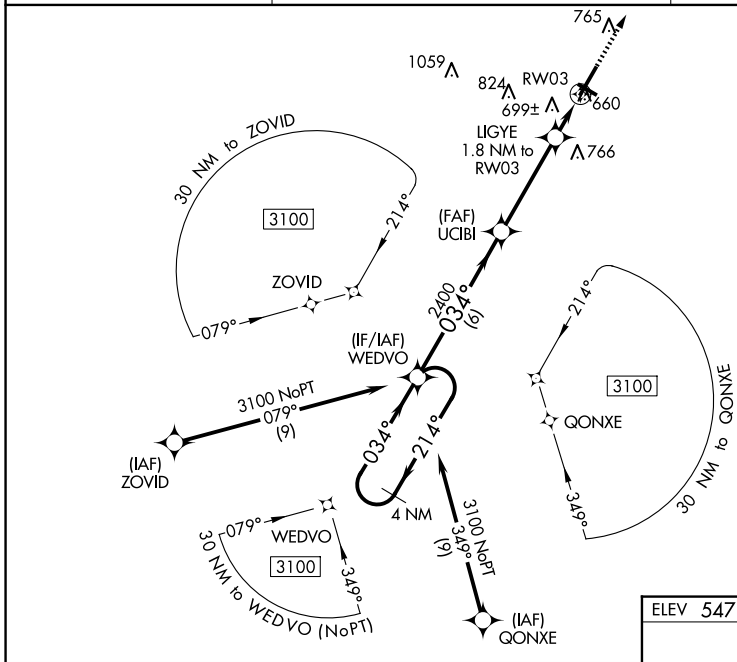
⚠ For uncompensated Baro-VNAV systems, LNAV/VNAV NA below -16°C (4°F) or above 54°C (130°F). DME/DME RNP-0.3 NA. Night landing: Rwy 30 NA. When local altimeter setting not received use Glasgow altimeter setting and increase all DA/MDA 80 feet; increase LPV all Cats visibility 1/8 mile and LNAV/VNAV all Cats 1/8 mile and LNAV Cat C and D and Circling Cat C and D visibility 1/4 mile. Helicopter visibility reduction below 3/4 SM NA. Baro-VNAV and VDP NA when using Glasgow altimeter setting.

MISSED APPROACH:
Climb to 3100 direct UGATE and hold.

ASOS
127.825

MEMPHIS CENTER
133.85 285.5

UNICOM
123.0 (CTAF) 0



CATEGORY	A	B	C	D
LPV DA		747-3/4	200 (200-3/4)	
LNAV/VNAV DA		1009-1 5/8	462 (500-1 5/8)	
LNAV MDA	960-1	413 (500-1)	960-1 1/8	413 (500-1 1/8)
C CIRCLING	1000-1 453 (500-1)	1120-1 573 (600-1)	1160-1 3/4 613 (700-1 3/4)	1200-2 653 (700-2)

SE-1, 20 FEB 2025 to 20 MAR 2025

SE-1, 20 FEB 2025 to 20 MAR 2025