

VORTAC TTH <b>115.3</b> Chan <b>100</b>	APP CRS <b>048°</b>	Rwy Idg TDZE Apt Elev <b>9020</b> <b>573</b> <b>589</b>
---	------------------------	--

# VOR RWY 5

TERRE HAUTE RGNL (HUF)

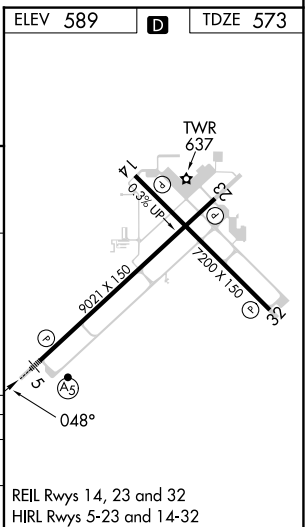
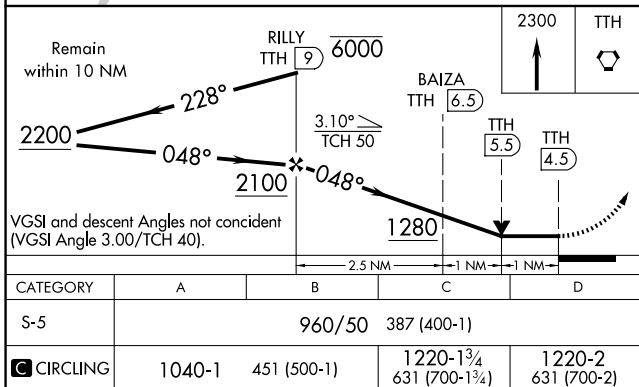
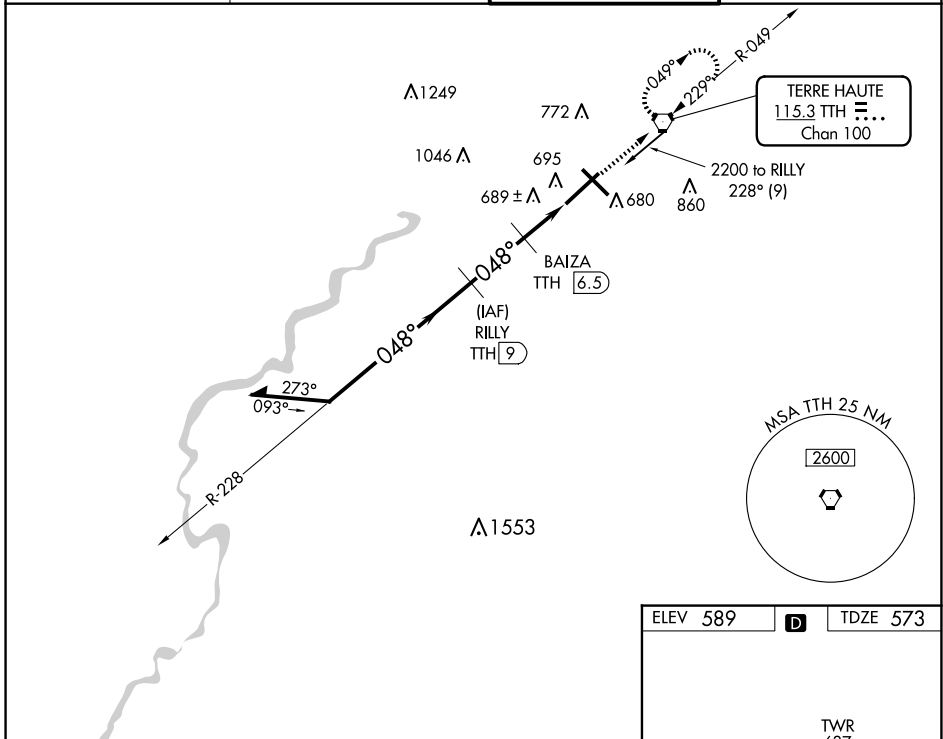
DME required.

**⚠** VDP NA when using Paris, IL altimeter setting. When local altimeter setting not received, use Paris altimeter setting and increase all MDA 80 feet and Circling Cat C/D visibility ¼ SM. For inop ALS, increase S-5 Cat C/D visibility to RVR 6000. Rwy 5 helicopter visibility reduction below ¾ SM NA.

MALSR

MISSED APPROACH: Climb to 2300 direct TTH VORTAC and hold.

ATIS <b>127.5 269.375</b>	HULMAN APP CON <b>125.45 339.8</b>	HULMAN TOWER <b>134.725 322.475</b>	GND CON <b>121.6 348.6</b>
------------------------------	---------------------------------------	--	-------------------------------



EC-2, 20 FEB 2025 to 20 MAR 2025

EC-2, 20 FEB 2025 to 20 MAR 2025