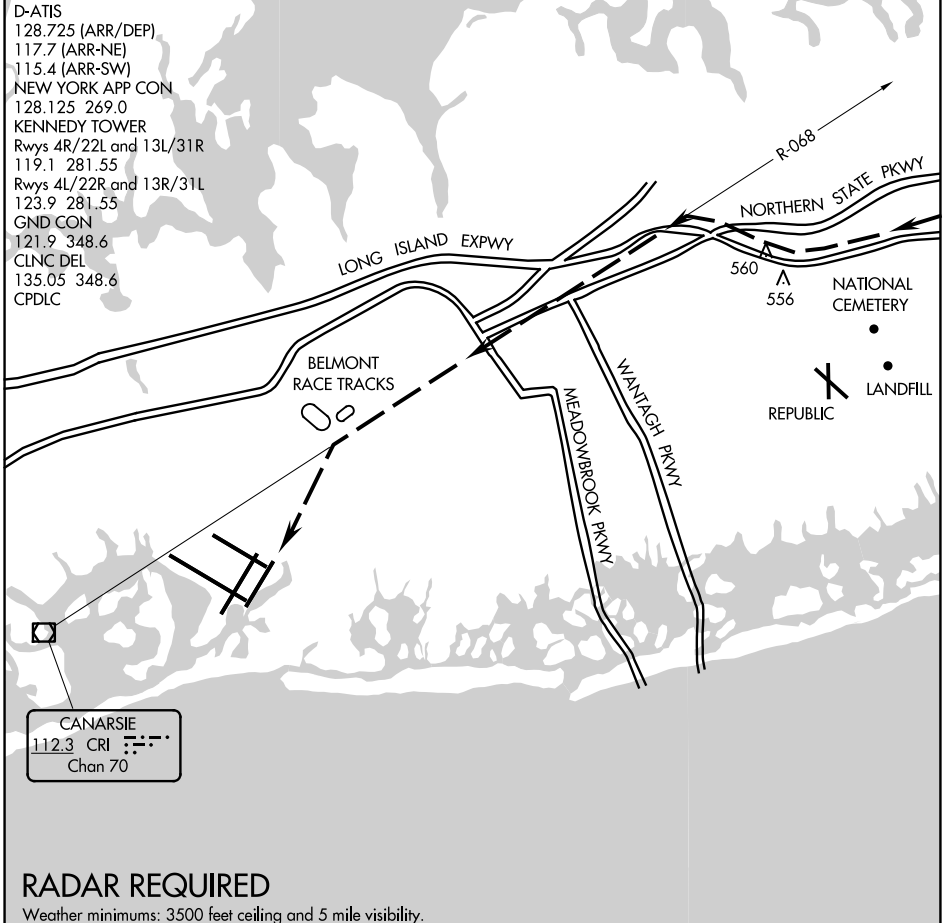


# BELMONT VISUAL RWY 22L

D-ATIS  
 128.725 (ARR/DEP)  
 117.7 (ARR-NE)  
 115.4 (ARR-SW)  
 NEW YORK APP CON  
 128.125 269.0  
 KENNEDY TOWER  
 Rwys 4R/22L and 13L/31R  
 119.1 281.55  
 Rwys 4L/22R and 13R/31L  
 123.9 281.55  
 GND CON  
 121.9 348.6  
 CLNC DEL  
 135.05 348.6  
 CPDLC



CANARSIE  
 112.3 CRI  
 Chan 70

## RADAR REQUIRED

Weather minimums: 3500 feet ceiling and 5 mile visibility.

NM	1	2	3	4	5	6	7	8	9	10	11	12	13	14	15	16	17	18	19	20	21	22	23	24	25
----	---	---	---	---	---	---	---	---	---	----	----	----	----	----	----	----	----	----	----	----	----	----	----	----	----

### BELMONT VISUAL RUNWAY 22L

When cleared for the Belmont Visual Approach to Runway 22L, follow the Long Island Expressway westbound until intercepting CRI R-068 at 3000'. Navigate on CRI R-068 till abeam Belmont Race Track at 1600'. Remain east of Belmont Race Track and proceed direct to JFK Runway 22L.