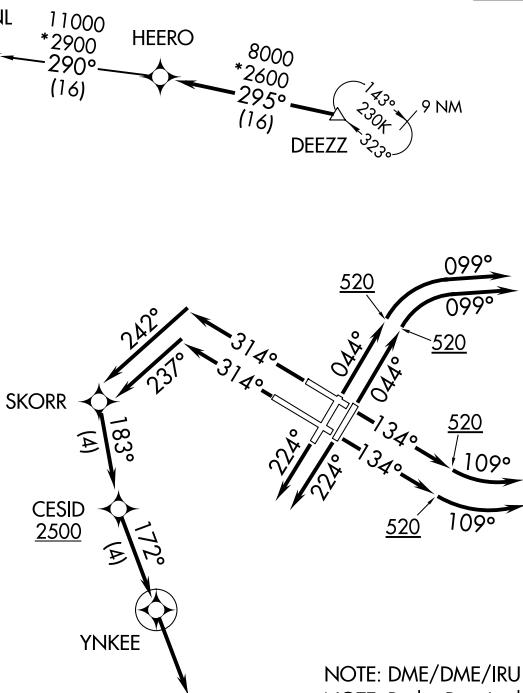


**TOP ALTITUDE:  
5000**

(DEEZZ5:DEEZZ) 18200  
DEEZZ FIVE DEPARTURE (RNAV)

AL6-10 (FAA)

JOHN F KENNEDY INTL (JFK)  
NEW YORK, NEW YORK



D-ATIS  
128.725  
CLNC DEL  
135.05 348.6  
CPDLC  
GND CON  
121.9 348.6  
KENNEDY TOWER  
Rwys 4R/22L and 13L/31R  
119.1 281.55  
Rwys 4L/22R and 13R/31L  
123.9 281.55  
NEW YORK DEP CON  
135.9 353.75

15000  
\*2900  
237°  
(33)

15000  
\*2700  
252°  
(27)

TOWIN

CANDR

KURNL

11000  
\*2900  
290°  
(16)

HEERO

8000  
\*2600  
295°  
(16)

DEEZZ

SKORR

CESID  
2500

YNKEE

DEER PARK  
DPK

**TAKEOFF MINIMUMS**

Rwys 4L/R, 13L, 22L/R: Standard.  
Rwy 13R: 300-1½ or Standard with minimum climb of 250' per NM to 300.  
Rwys 31L/R: Standard with minimum climb of 500' per NM to 1400.

NOTE: DME/DME/IRU or GPS required.  
NOTE: Radar Required.  
NOTE: RNAV 1.  
NOTE: TOWIN transition ATC assigned only.

NOTE: Chart not to scale.

(NARRATIVE ON FOLLOWING PAGE)

DEEZZ FIVE DEPARTURE (RNAV)  
(DEEZZ5:DEEZZ) 19JUL18

NEW YORK, NEW YORK  
JOHN F KENNEDY INTL (JFK)

# DEZZ FIVE DEPARTURE (RNAV)



## DEPARTURE ROUTE DESCRIPTION

TAKEOFF RWYS 4L/R: Climb heading 044° to 520, then climbing right turn heading 099° or as assigned by ATC, thence . . . .

TAKEOFF RWYS 13L/R: Climb heading 134° to 520, then climbing left turn heading 109° or as assigned by ATC, thence . . . .

TAKEOFF RWYS 22L/R: Climb heading 224° or as assigned by ATC, thence . . . .

TAKEOFF RWY 31L: Climb heading 314° to intercept course 237° to SKORR, then on track 183° to cross CESID at or above 2500, then on track 172° to YNKEE, then on heading 172° or as assigned by ATC, thence . . . .

TAKEOFF RWY 31R: Climb heading 314° to intercept course 242° to SKORR, then on track 183° to cross CESID at or above 2500, then on track 172° to YNKEE, then on heading 172° or as assigned by ATC, thence . . . .

. . . . expect vectors to DEZZ, then on track 295° to HEERO. Maintain 5000. Expect clearance to filed altitude/flight level within ten (10) minutes after departure.

CANDR TRANSITION (DEZZ5.CANDR)

TOWIN TRANSITION (DEZZ5.TOWIN)

NE-2, 20 FEB 2025 to 20 MAR 2025

NE-2, 20 FEB 2025 to 20 MAR 2025